



Light, Shadows & Color: Photometric Image Formation

EECS 598-08 Fall 2014

Instructor: Jason Corso (jjcorso)

Foundations of Computer Vision

web.eecs.umich.edu/~jjcorso/t/598F14

Readings: FP 2 and 3; SZ 2.2 and 2.3

Date: 9/22/14

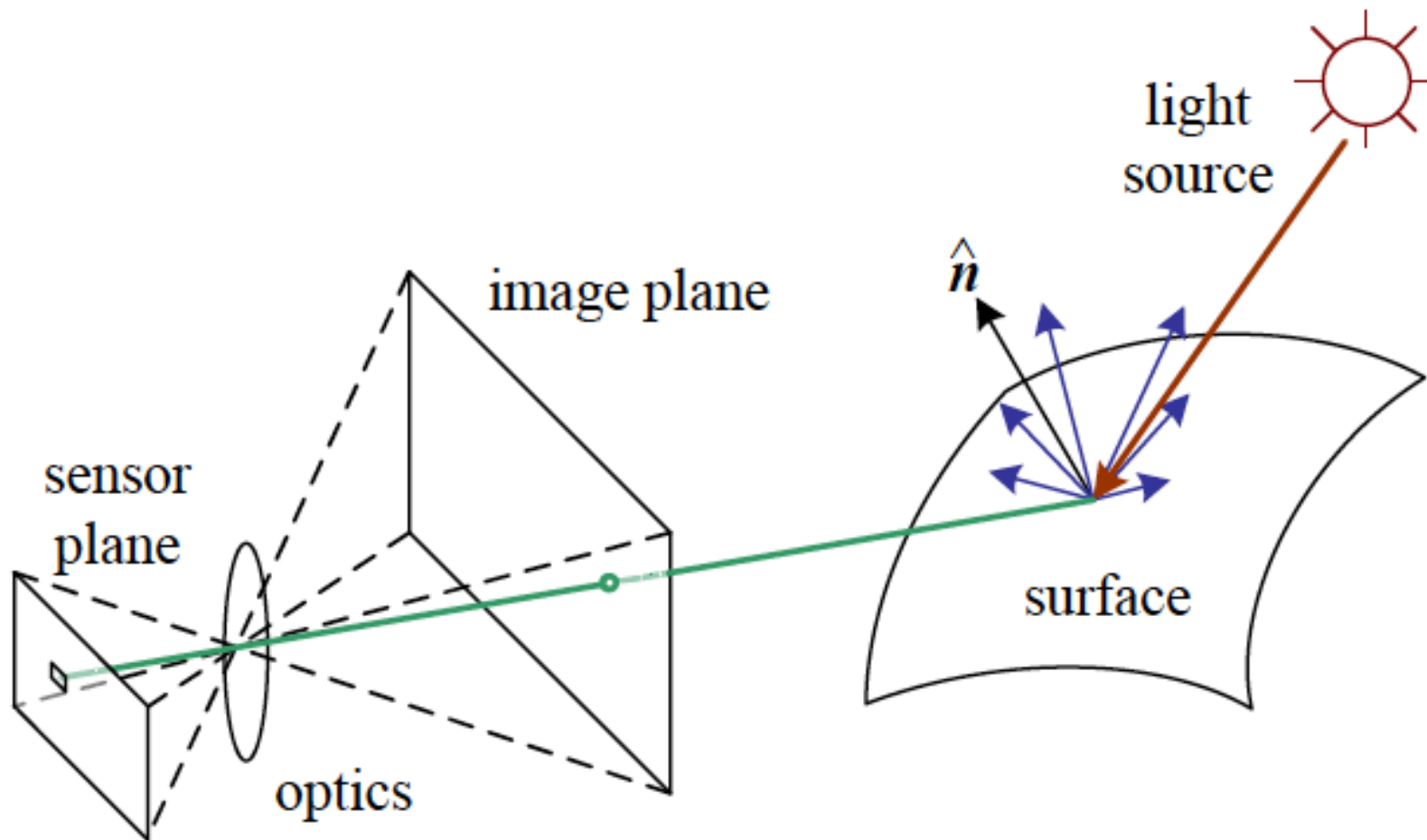
Plan

- Radiometry and the BRDF
- Light and shading models
- The digital camera

Quantum “Catception”



Photometric Image Formation



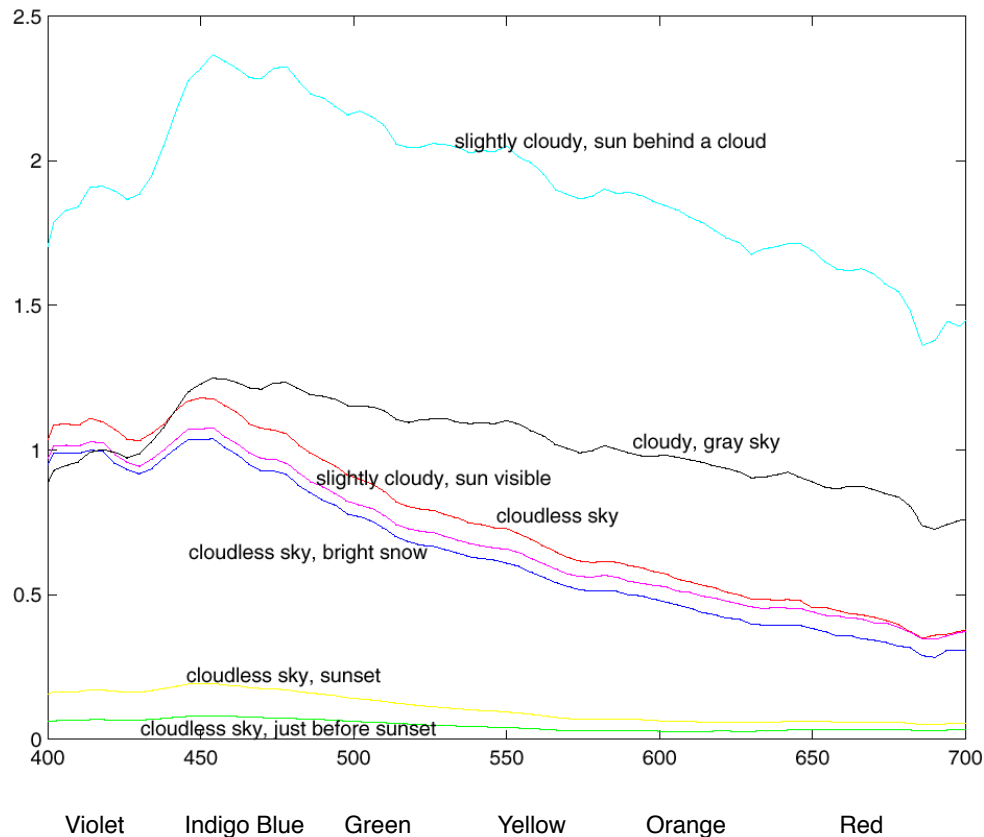
Photometric Image Formation

- Three components to pixel brightness
 - Illumination and light sources
 - Surfaces and reflection
 - Camera response



Lights in the real-world

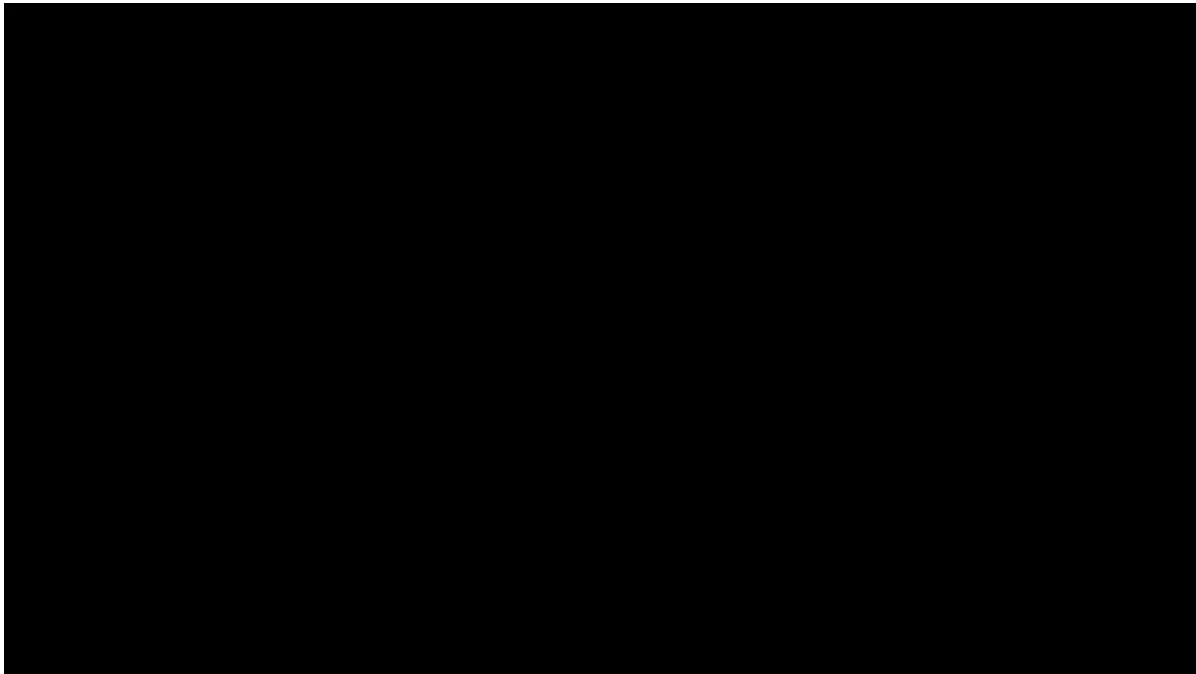
- Real lights are complicated
 - Sun-light, incandescent bulbs, fluorescent bulbs



Measurements of relative spectral power of sunlight, made by J. Parkkinen and P. Silfsten. Relative spectral power is plotted against wavelength in nm. The visible range is about 400nm to 700nm. The color names on the horizontal axis give the color names used for monochromatic light of the corresponding wavelength --- the “colors of the rainbow”. Mnemonic is “Richard of York got blisters in Venice”.

Lights in the real-world

- Real lights are complicated
 - Sun-light, incandescent bulbs, fluorescent bulbs
 - Different spectra
 - Different directions
 - Time-varying
- Fluorescence and biochemistry as well.



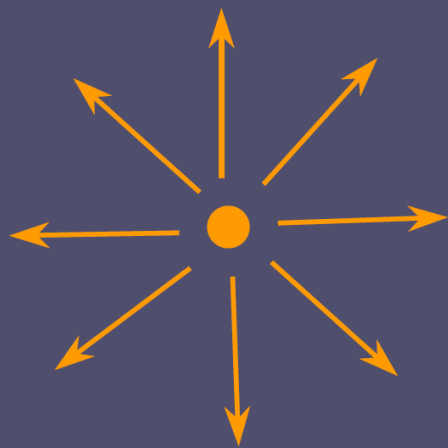
Light Models

- Coarse approximations to real light
 - Point light
 - Directional
 - Spot
 - Has a location in space and a distribution over wavelengths $L(\lambda)$
 - Area lights
 - Light-fields
- Environment Map $L(\hat{\mathbf{v}}; \lambda)$
 - Maps incident light directions to color values





Point Light



point light

Specified by:

- position (x,y,z)
- intensity (r,g,b)

**Radiates equal intensity
in all directions**

$$L = P_{\text{light}} - P_{\text{surface}}$$



Directional Light

•
point light
at infinity

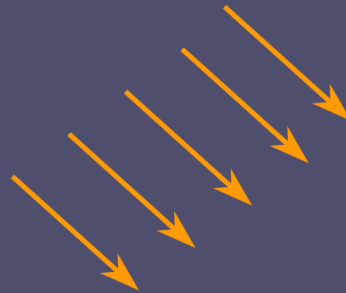
Point light at infinity

Specified by:

- direction (x,y,z)
- intensity (r,g,b)

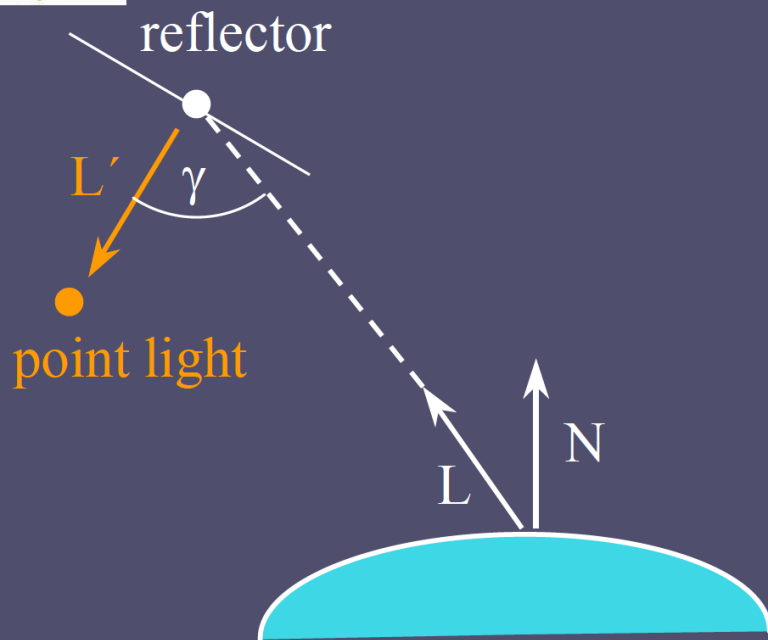
**All light rays are
parallel**

$L = -\text{direction}$





Spot (Warn) Light



Specular reflection of
point light source

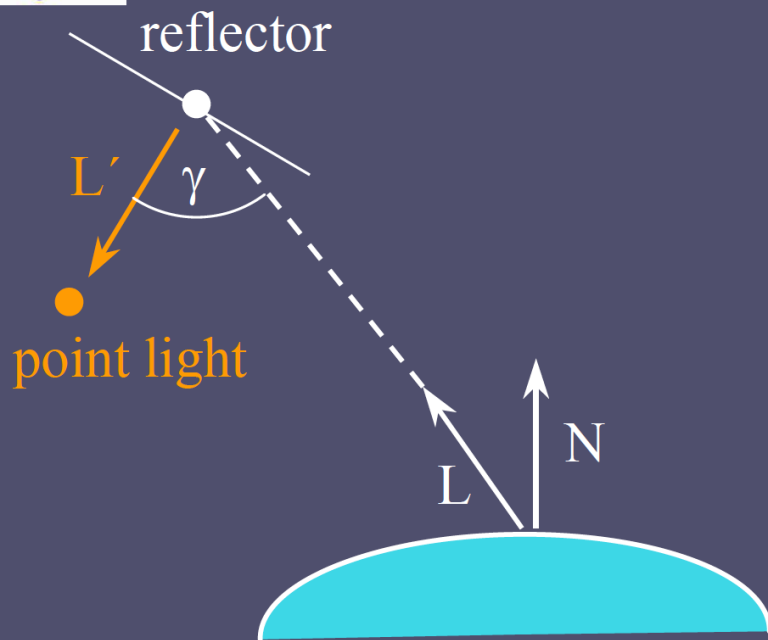
Specified by:

- position of reflector
- position of point light
(or direction to point light)
- intensity of point light
- falloff exponent

$$I_{\text{warn}} = I_{\text{point}} \cos^p \gamma = I_{\text{point}} (V' \cdot R')^p = I_{\text{point}} (-L \cdot L')^p$$



Spot (Warn) Light



**Specular reflection of
point light source**

Specified by:

- position of reflector
- position of point light
(or direction to point light)
- intensity of point light
- falloff exponent

$$I_{\text{warn}} = I_{\text{point}} \cos^p \gamma = I_{\text{point}} (V' \cdot R')^p = I_{\text{point}} (-L \cdot L')^p$$



Warn Light Profile and Examples

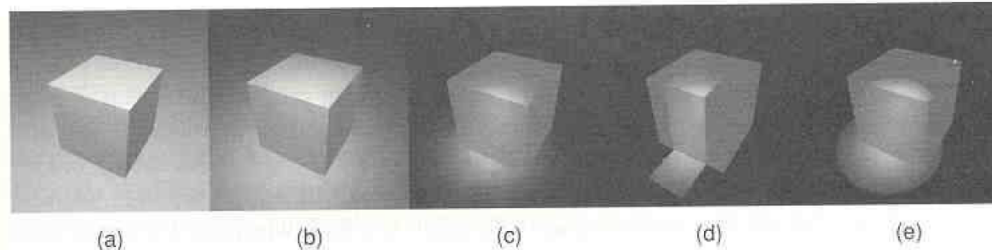
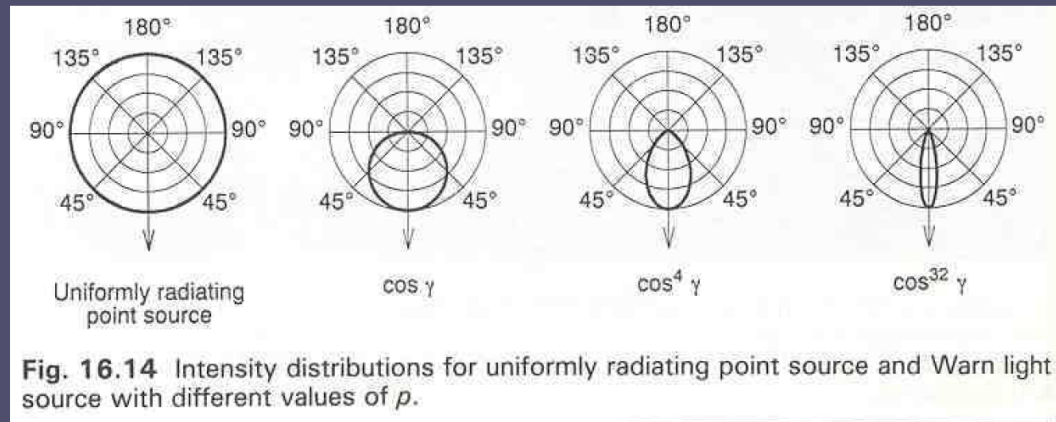
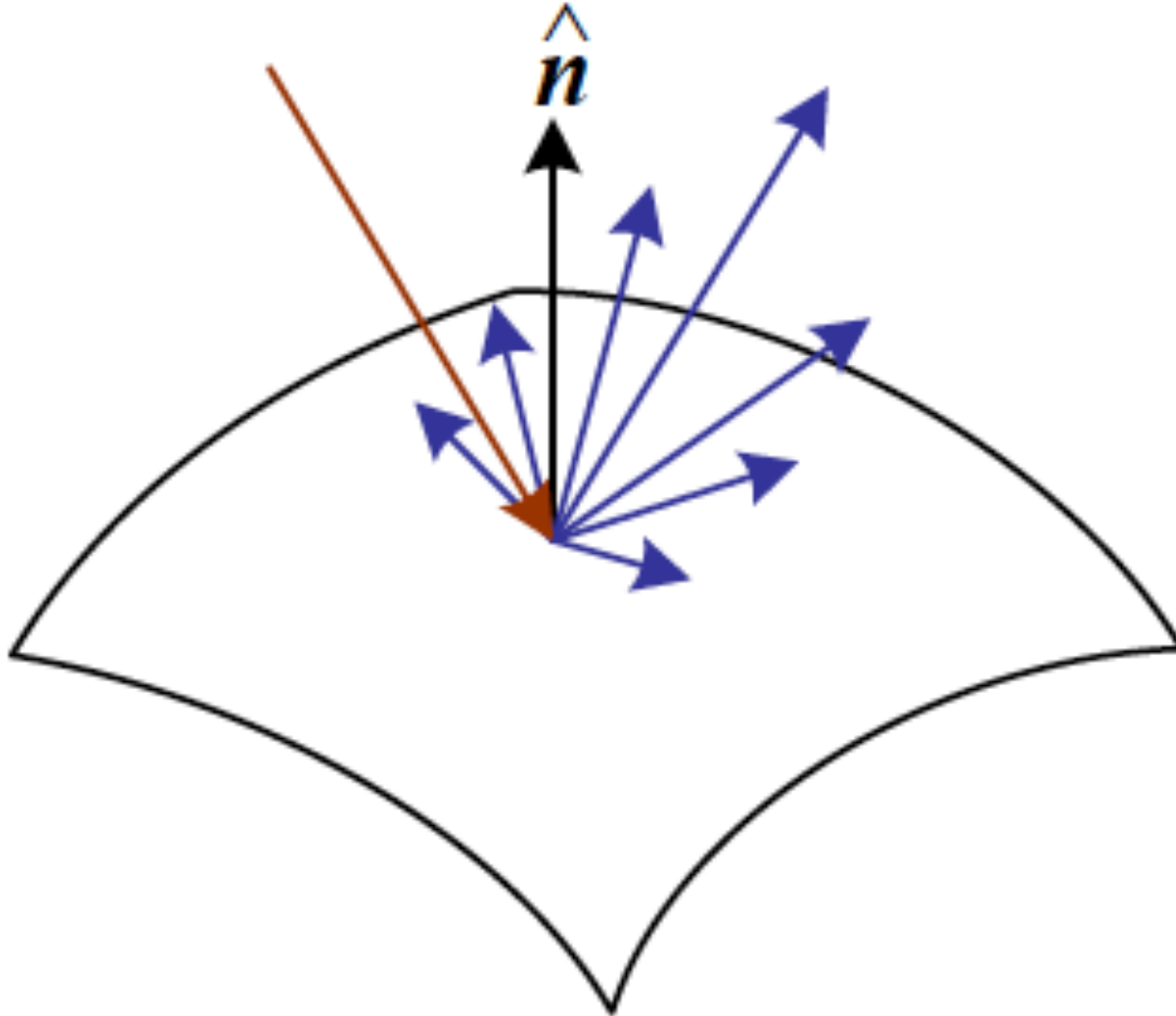


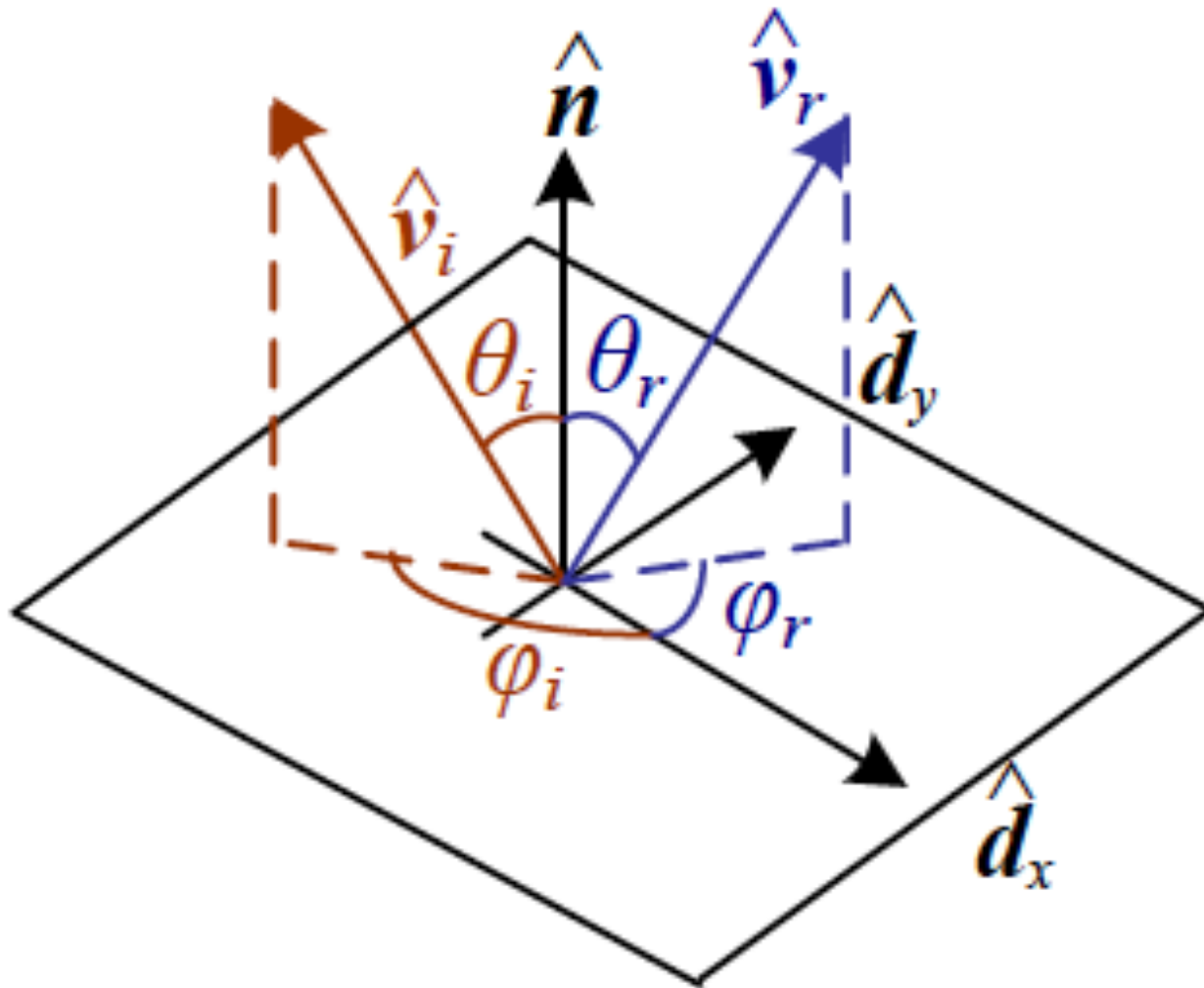
Fig. 16.15 Cube and plane illuminated using Warn lighting controls. (a) Uniformly radiating point source (or $p = 0$). (b) $p = 4$. (c) $p = 32$. (d) Flaps. (e) Cone with $\delta = 18^\circ$. (By David Kurlander, Columbia University.)

From Foley, vanDam, Feiner, and Hughes, Computer Graphics: Principles and Practice, 2nd edition, page 732, 733

Surfaces and Reflectance

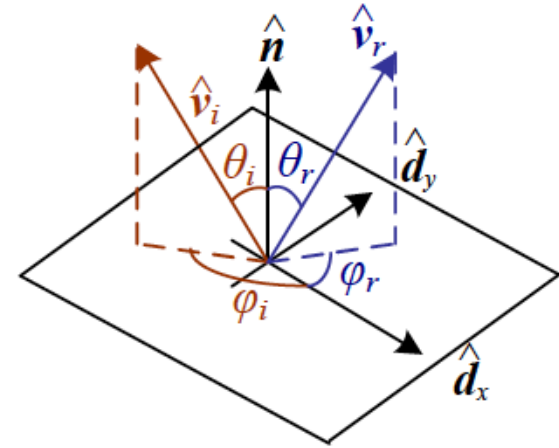
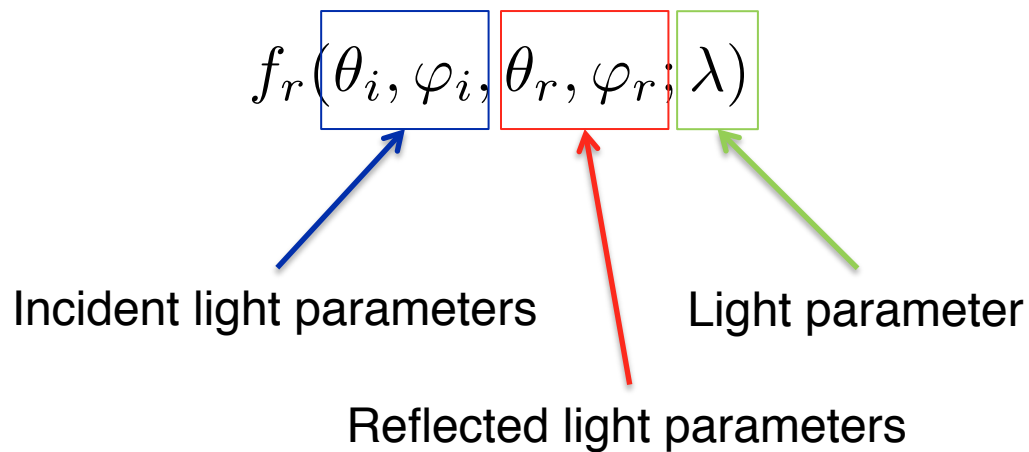


Surfaces and Reflectance: The BRDF



The Bidirectional Reflectance Distribution Function

- A general model of light scattering

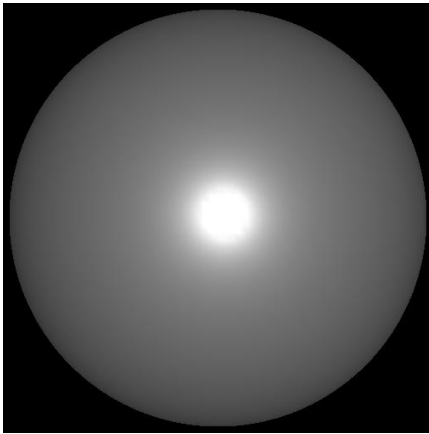


- Helmholtz reciprocity
- Simplified form for isotropic materials

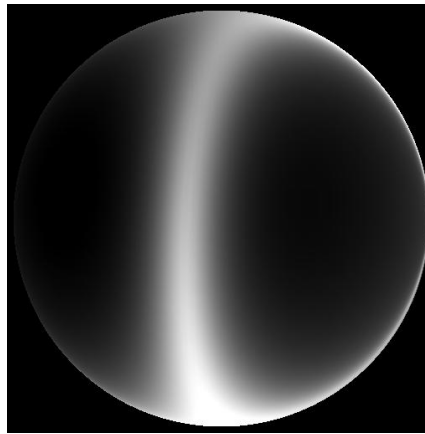
$$f_r(\hat{\mathbf{v}}_i, \hat{\mathbf{v}}_r, \hat{\mathbf{n}}; \lambda)$$

BRDF

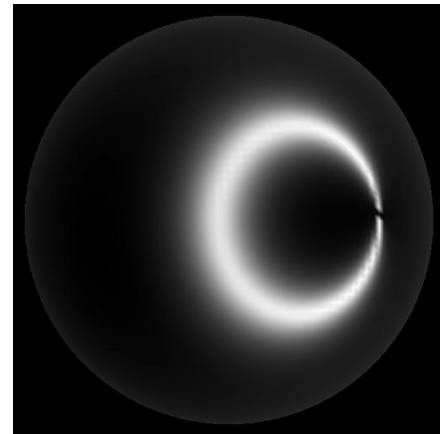
- Isotropic vs. Anisotropic



Isotropic

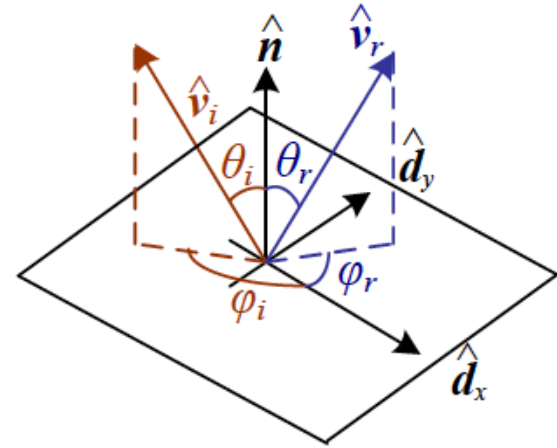


Anisotropic



BRDF

- Light exiting a surface point in a direction under a given lighting condition:



$$L(\hat{\mathbf{v}}_r; \lambda) = \int L_i(\hat{\mathbf{v}}_i; \lambda) f_r(\hat{\mathbf{v}}_i, \hat{\mathbf{v}}_r, \hat{\mathbf{n}}; \lambda) \boxed{\cos^+ \theta_i} d\hat{\mathbf{v}}_i$$

$$\cos^+ \theta_i = \max(0, \cos \theta_i)$$

Foreshortening effect due to surface orientation

BRDF

- Understanding and modeling the BRDF is critical to realism in graphics as well as various computer vision applications.
- <http://www.disneyanimation.com/technology/brdf.html>

BRDF Explorer

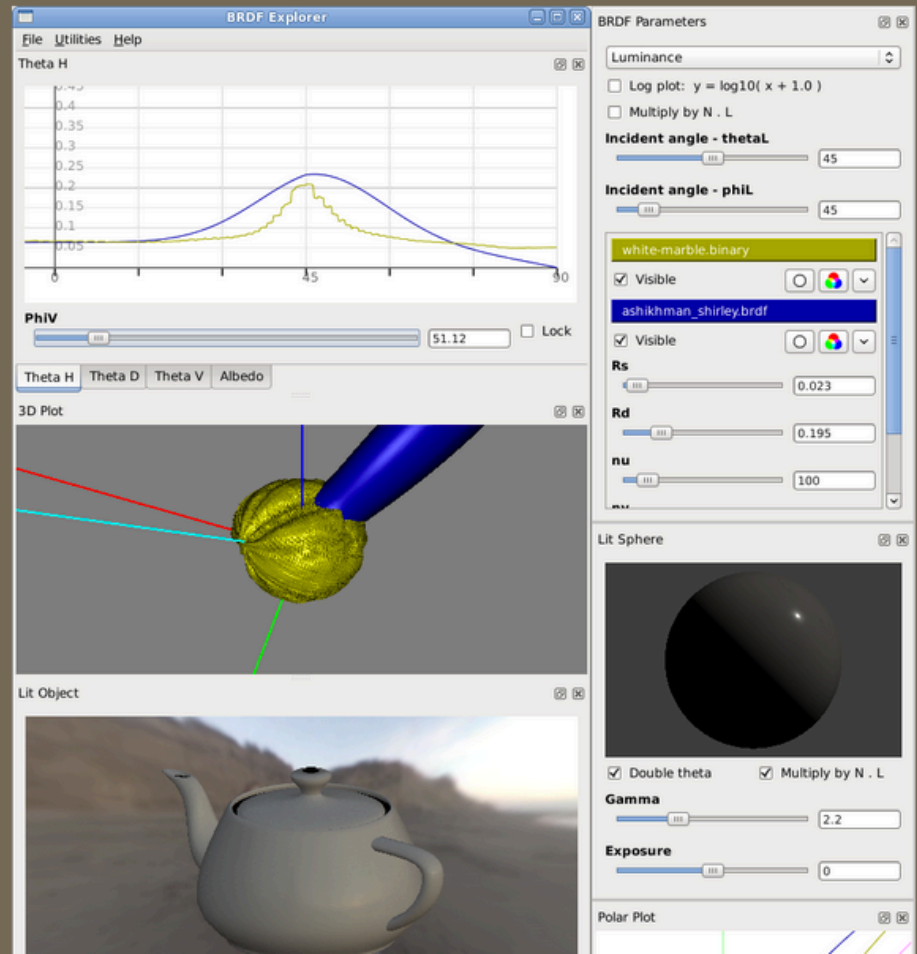
BRDF Explorer is an application that allows the development and analysis of bidirectional reflectance distribution functions (BRDFs). It can load and plot analytic BRDF functions (coded as functions in OpenGL's GLSL shader language), measured material data from the MERL database, and anisotropic measured material data from MIT CSAIL. Graphs and visualizations update in realtime as parameters are changed, making it a useful tool for evaluating and understanding different BRDFs (and other component functions).

Motivation

In the pursuit of visual realism in our films, we have spent a considerable amount of time exploring the strengths and weaknesses of different BRDFs. To understand the properties of different BRDFs, we found it helpful to be able to visualize and graph them in different ways to see how they responded to illumination in different configurations. Additionally, we wanted to compare BRDFs to sampled BRDF data (mainly those in the MERL BRDF Database). We developed BRDF Explorer because at the time, no publicly available tool met our needs (although BRDFLab, which has since been released, has some similar capabilities).

Screenshot

A screenshot is worth a thousand words:



Diffuse or Lambertian Reflection

- Light is scattered uniformly in all directions.

$$f_d(\hat{\mathbf{v}}_i, \hat{\mathbf{r}}_i, \hat{\mathbf{n}}; \lambda) = f_d(\lambda)$$

- The amount of light depends on the angle between the incident light direction and the surface normal.
 - Lambert's cosine law

$$\begin{aligned} L_d(\hat{\mathbf{v}}_r; \lambda) &= \sum_i L_i(\lambda) f_d(\lambda) \cos^+ \theta_i \\ &= \sum_i L_i(\lambda) f_d(\lambda) \left[\hat{\mathbf{v}}_i^\top \hat{\mathbf{n}} \right]^+ \end{aligned}$$



Diffuse Reflection Examples



Fig. 16.3 Spheres shaded using a diffuse-reflection model (Eq. 16.4). For all spheres, $I_p = 1.0$. From left to right, $k_d = 0.4, 0.55, 0.7, 0.85, 1.0$. (By David Kurlander, Columbia University.)

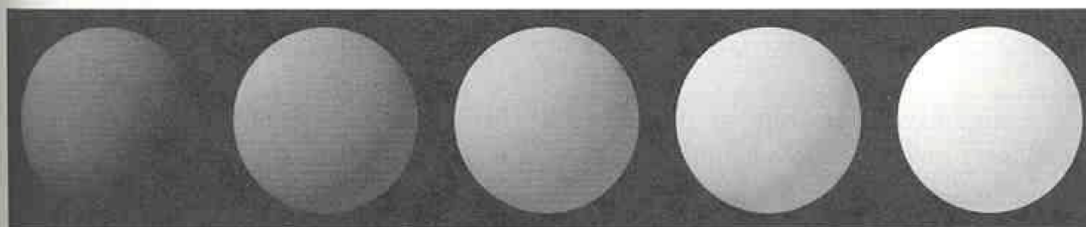


Fig. 16.4 Spheres shaded using ambient and diffuse reflection (Eq. 16.5). For all spheres, $I_a = I_p = 1.0$, $k_d = 0.4$. From left to right, $k_a = 0.0, 0.15, 0.30, 0.45, 0.60$. (By David Kurlander, Columbia University.)

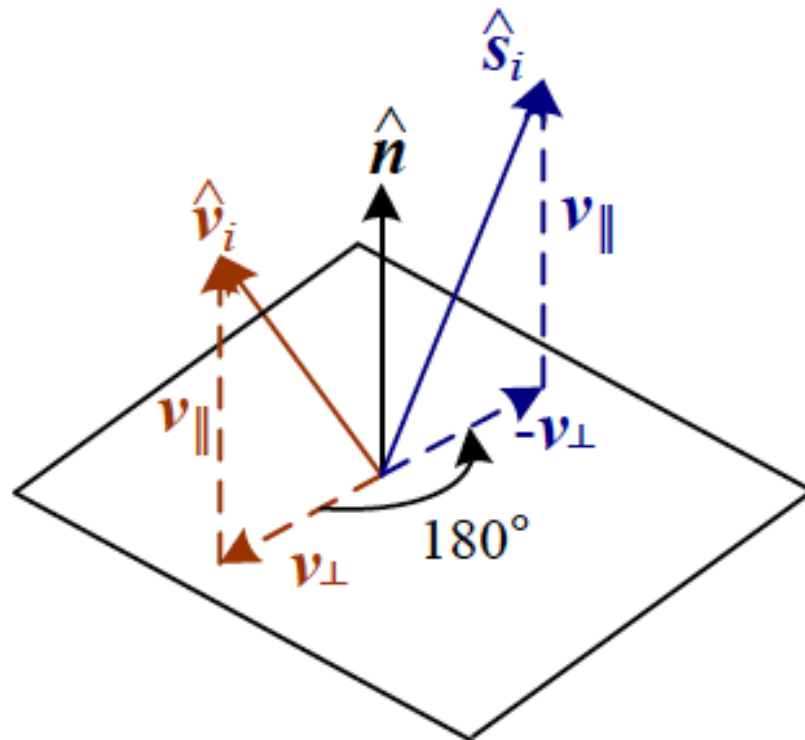
From Foley, vanDam, Feiner, and Hughes, Computer Graphics: Principles and Practice, 2nd edition, page 725

Diffuse Vs. Specularity



Specular (or Mirror) Reflections

- Specularity depends strongly on the direction of the outgoing light.
- Mirror-like reflection: incoming light is reflected off the surface in a single direction (which is the rotation of 180 degree around the surface normal).



Phong Shading Model

Ambient Light

Diffuse Reflectance

Specular Reflectance

$$\begin{aligned}
 L_{\text{Phong}}(\hat{\mathbf{v}}_r; \lambda) = & \boxed{k_a(\lambda) L_a(\lambda)} + \\
 & \boxed{k_d(\lambda) \sum_i L_i(\lambda) f_d(\lambda) [\hat{\mathbf{v}}_i^T \hat{\mathbf{n}}]^+} + \\
 & \boxed{k_s(\lambda) \sum_i L_i(\lambda) [\hat{\mathbf{v}}_r^T \hat{\mathbf{s}}_i]^{k_e}}
 \end{aligned}$$



Phong Illumination Example

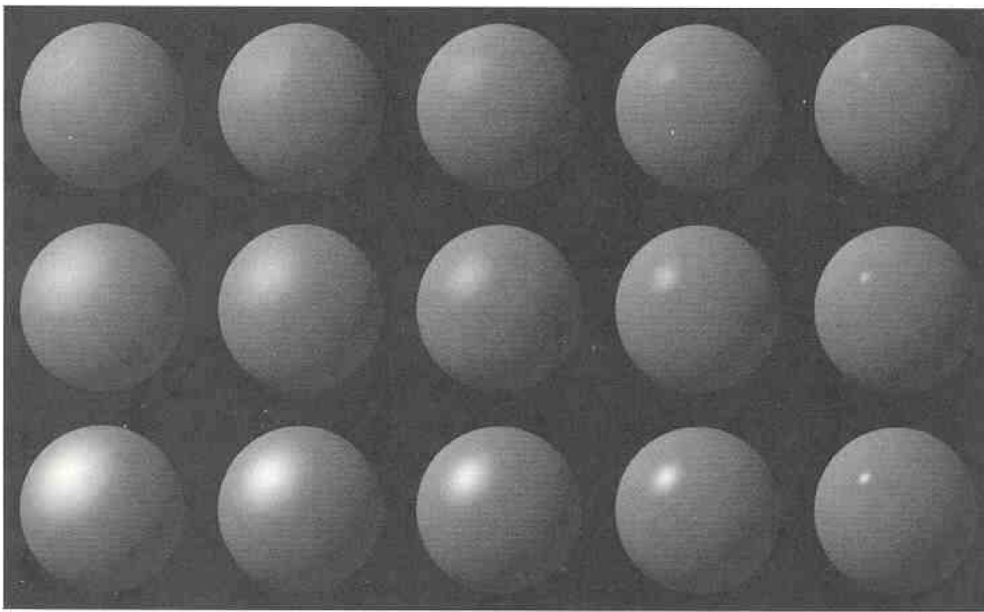


Fig. 16.10 Spheres shaded using Phong's illumination model (Eq. 16.14) and different values of k_s and n . For all spheres, $l_a = l_p = 1.0$, $k_a = 0.1$, $k_d = 0.45$. From left to right, $n = 3.0, 5.0, 10.0, 27.0, 200.0$. From top to bottom, $k_s = 0.1, 0.25, 0.5$. (By David Kurlander, Columbia University.)

From Foley, vanDam, Feiner, and Hughes, Computer Graphics: Principles and Practice, 2nd edition, page 730

Torrance and Sparrow Shading

- Phong shading used a power of the cosine of the angle law

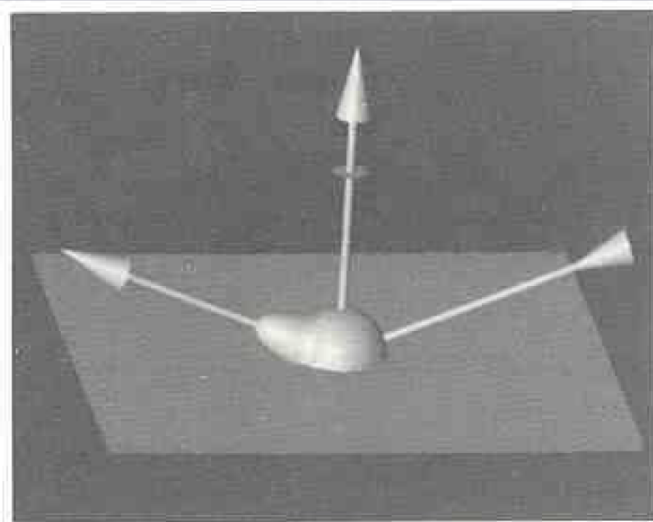
$$f_s(\theta_s; \lambda) = k_s(\lambda) \cos^{k_e} \theta_s$$

- The Torrance and Sparrow model uses a Gaussian

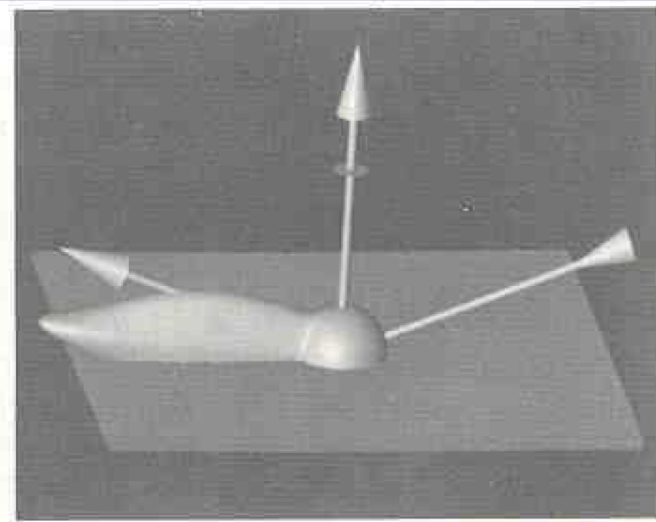
$$f_s(\theta_s; \lambda) = k_s(\lambda) \exp(-c_s^2 \theta_s^2)$$



Phong vs. Cook/Torrance Example



(a) Phong model



(b) Torrance-Sparrow model

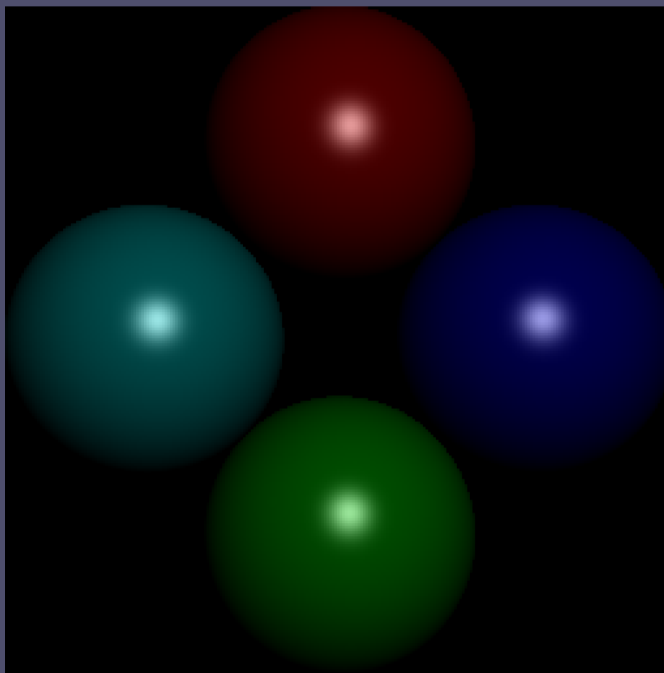
Fig. 16.44 Comparison of Phong and Torrance–Sparrow illumination models for light at a 70° angle of incidence. (By J. Blinn [BLIN77a], courtesy of the University of Utah.)

From Foley, vanDam, Feiner, and Hughes, Computer Graphics: Principles and Practice, 2nd edition, page 768

Wait a minute; light bounces...a lot



No Recursion

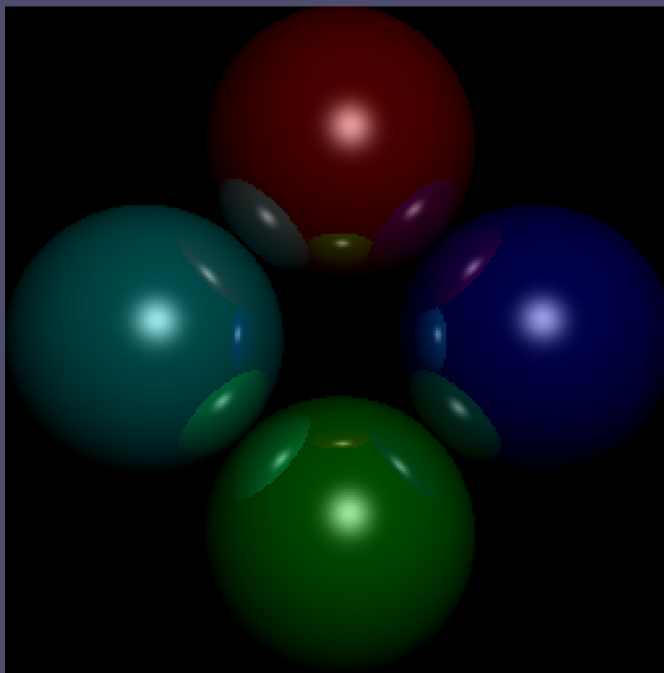


Johns Hopkins Department of Computer Science
Course 600.456: Rendering Techniques, Professor: Jonathan Cohen

Wait a minute; light bounces...a lot



1 Bounce (level of recursion)

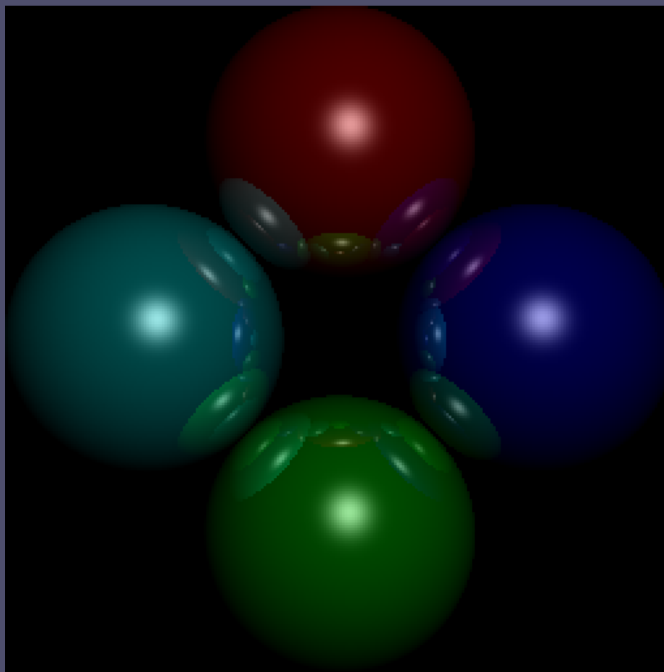


Johns Hopkins Department of Computer Science
Course 600.456: Rendering Techniques, Professor: Jonathan Cohen

Wait a minute; light bounces...a lot



2 bounces

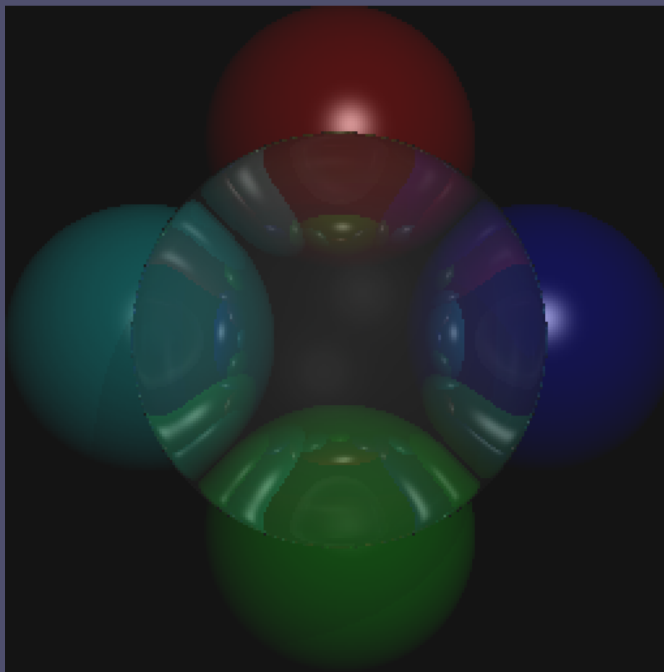


Johns Hopkins Department of Computer Science
Course 600.456: Rendering Techniques, Professor: Jonathan Cohen

Wait a minute; light bounces...a lot



Index of refraction > 1



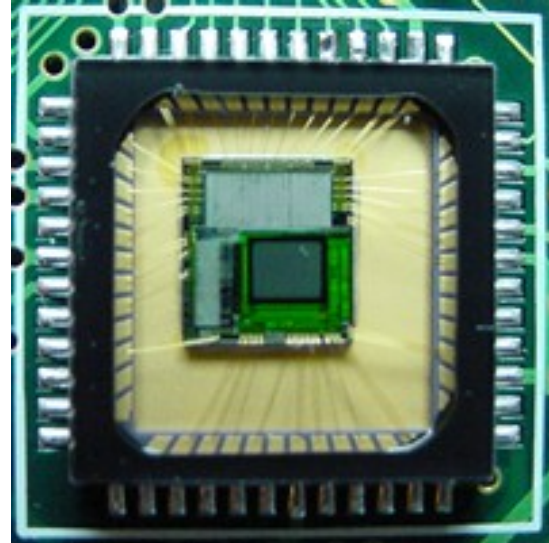
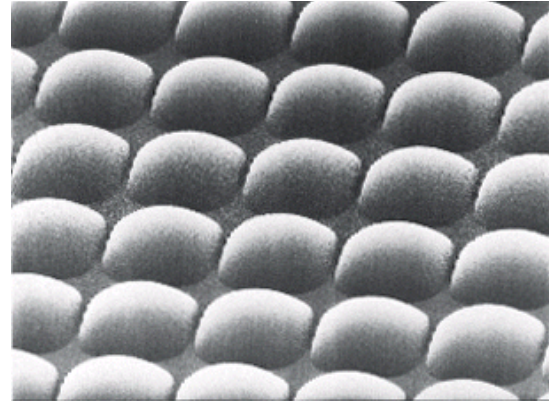
Johns Hopkins Department of Computer Science
Course 600.456: Rendering Techniques, Professor: Jonathan Cohen

A Word On Computer-Imaging

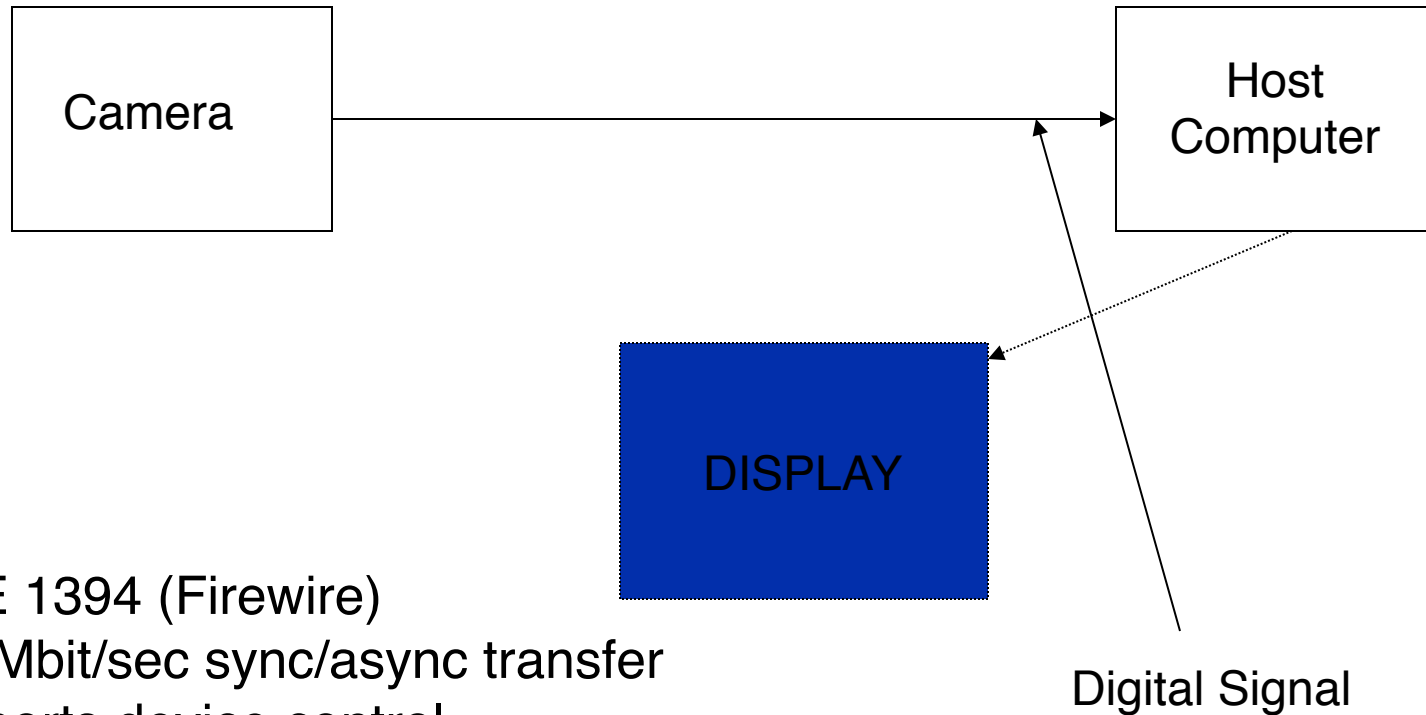
- Video imaging has gone from an exotic technology to everyday commodity.
- Originally (since ~1930) NTSC standard
 - 480 x 640 YUV
 - Interlaced
- Now, a wide variety of resolutions and quality
 - VGA (= NTSC)
 - SVGA (= 600x800)
 - XVGA (= 768x1024)
 - SXGA (=1024x1280)
 - UGA (= 1200x1600)
 - HD (= 1080x1960)
 - SHD (=1080x1960x2)

How Cameras Produce Images

- Basic process:
 - photons hit a detector
 - the detector becomes charged
 - the charge is read out as brightness
- Sensor types:
 - CCD (charge-coupled device)
 - most common
 - high sensitivity
 - high power
 - cannot be individually addressed
 - blooming
 - CMOS
 - simple to fabricate (cheap)
 - lower sensitivity, lower power
 - can be individually addressed



A Modern Digital Camera



IEEE 1394 (Firewire)
400 Mbit/sec sync/async transfer
Supports device control

USB 2.0
480 Mbit/sec (~280Mbit/sec in practice)
Less flexible, but simpler to implement

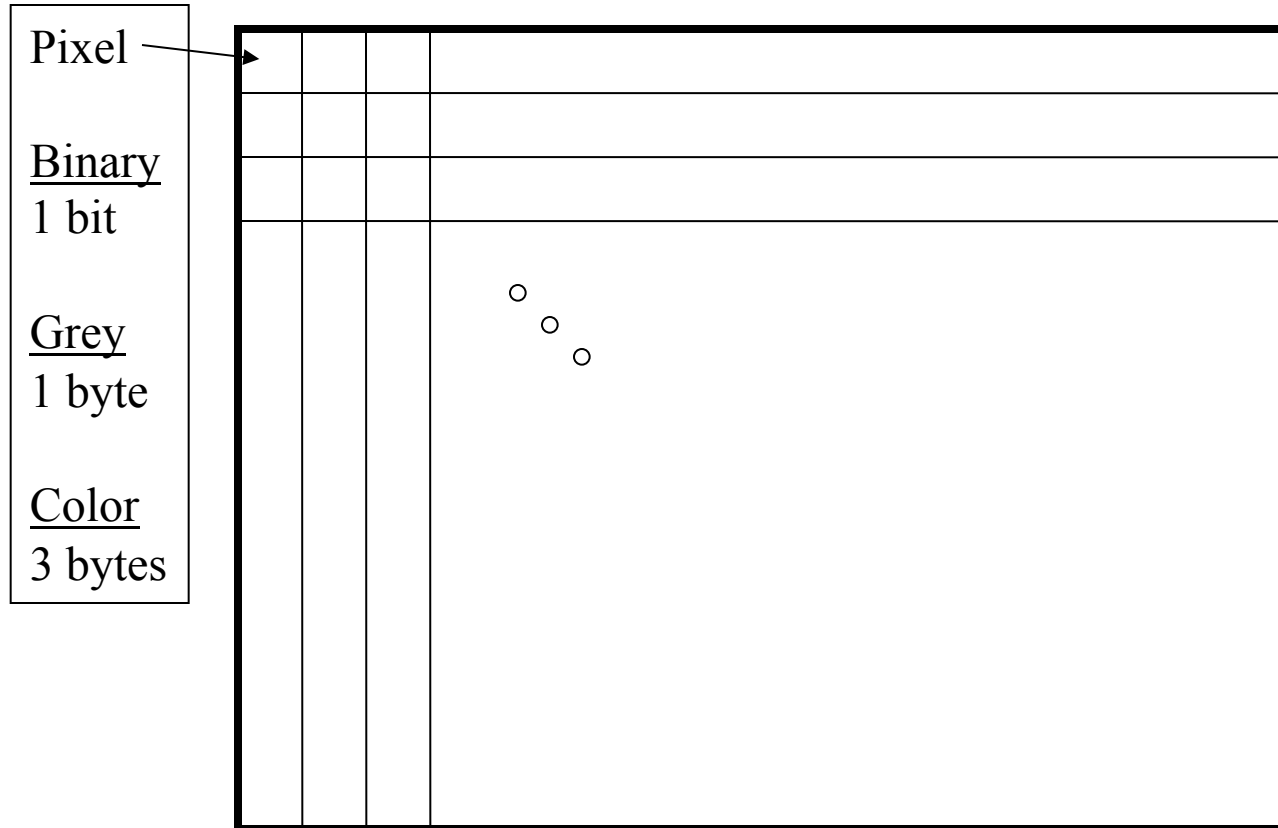
Other Issues

- Automatic Gain Control (AGC): adjusting amplification and black level to get a “good fit” of the incident light power to the range of the image
- Shuttering: Electronic “switch” that controls how long the CCD is “exposed.”
- White balance: Adjustment of the mapping from measured spectral quantities to image RGB quantities (we’ll talk about this more when we get to color).



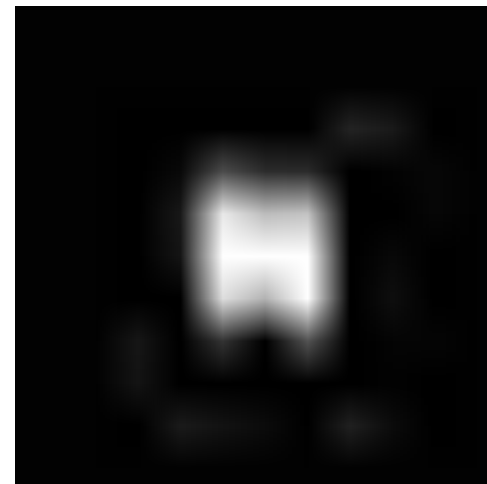
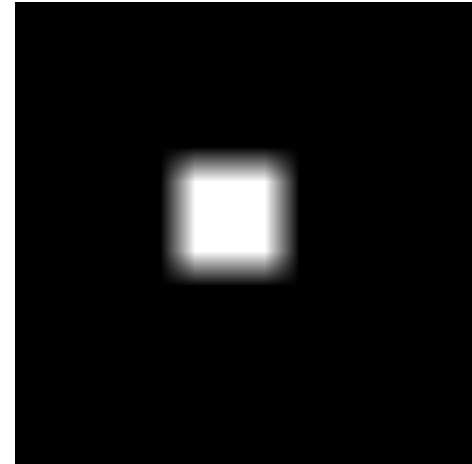
What’s going on here?

THE ORGANIZATION OF A 2D IMAGE



Storing Images

- Non-lossy schemes
 - pbm/pgm/ppm/pnm
 - code for file type, size, number of bands, and maximum brightness
 - tif (lossless and lossy versions)
 - bmp
 - gif (grayscale)
- Lossy schemes
 - gif (color)
 - jpg
 - uses Y Cb Cr color representation; subsamples the color
 - Uses DCT on result
 - Uses the fact the human system is less sensitive to color than spatial detail



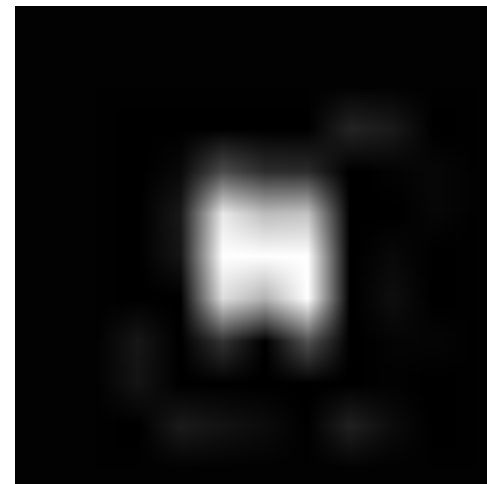
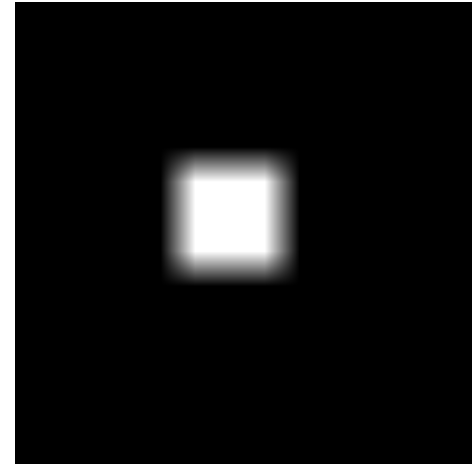
Storing Images

- Non-lossy schemes
 - pbm/pgm/ppm/pnm
 - code for file type, size, number of bands, and maximum brightness
 - tif (lossless and lossy versions)
 - bmp
 - gif (grayscale)

- Lossy schemes

- gif (color)
- jpg

- use sub
- Use
- Use n is less detail



GIF IMAGE FORMAT

- GIF (Graphics Interchange Format)
 - Limited to 8 bits/pixel for both color and gray-scale.

<u>8-bit index</u>	RED	GREEN	BLUE
0	R0	G0	B0
1	R1	G1	B1
2	R2	G2	B2
254	R254	G254	B254
255	R255	G255	B255

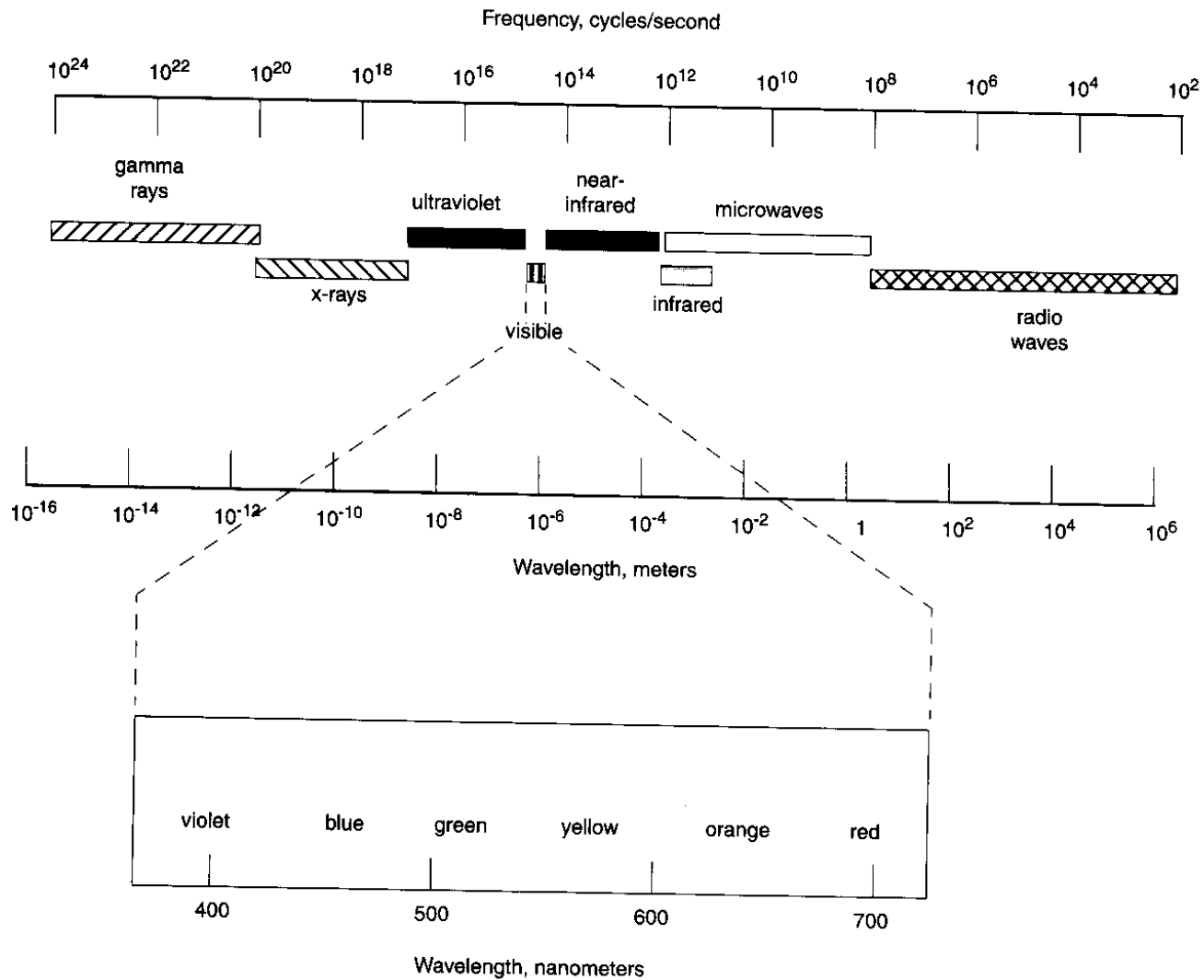
TIFF IMAGE FORMAT

- TIFF (Tagged Image File Format)
 - More general than GIF
 - Allows 24 bits/pixel
 - Supports 5 types of image compression including:
 - RLE (Run length encoding)
 - LZW (Lempel-Ziv-Welch)
 - JPEG (Joint Photographic Experts Group)

Color

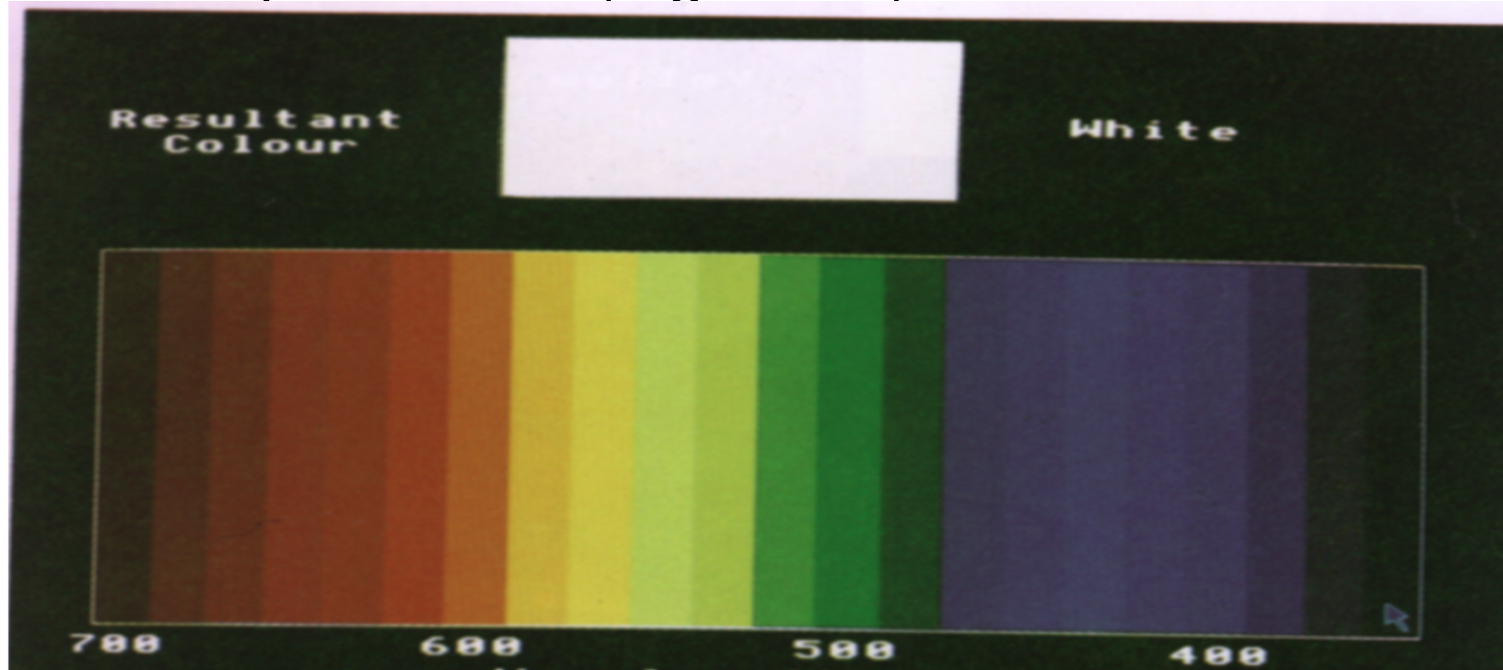


What is Color?

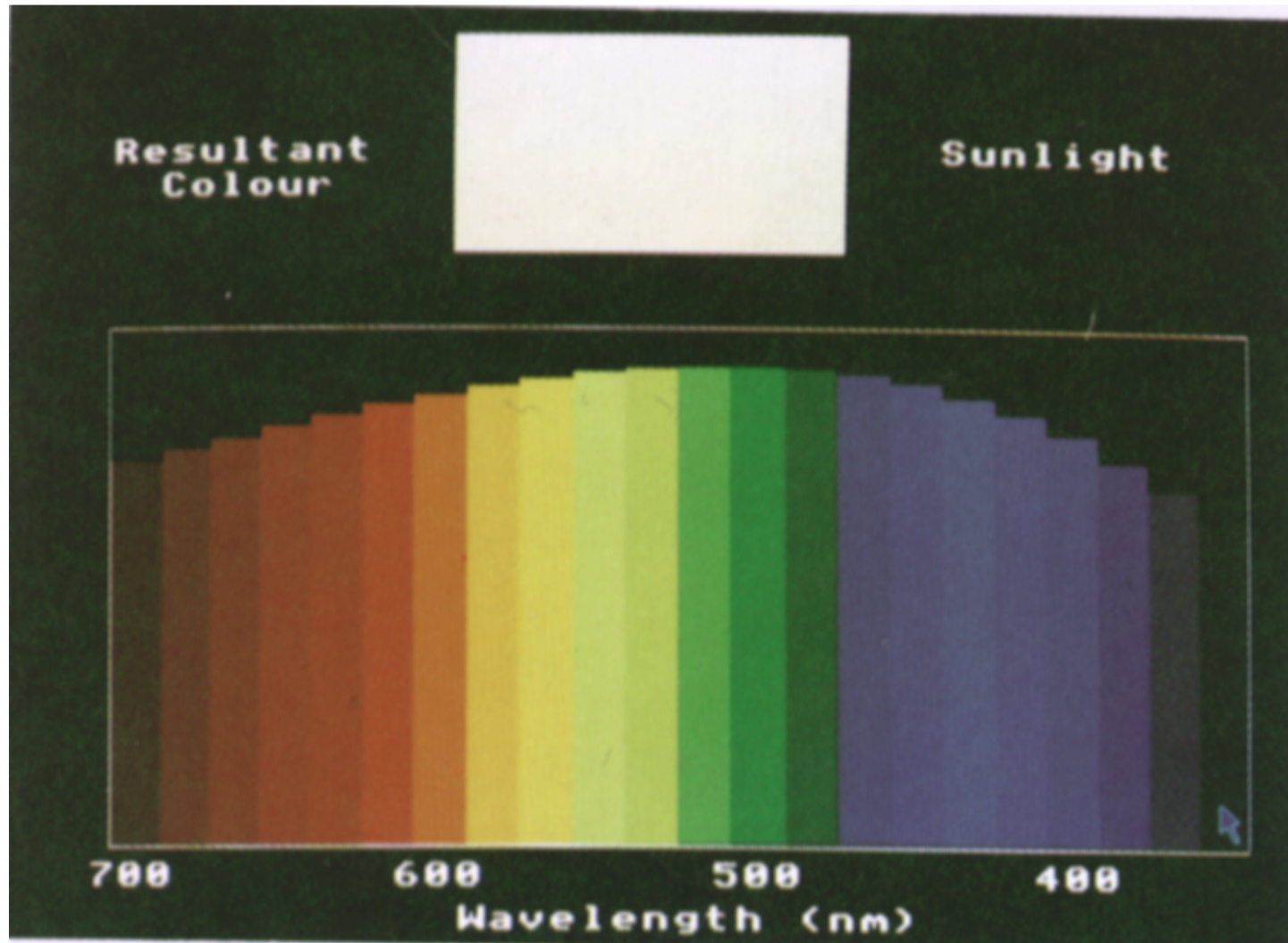


What is Color?

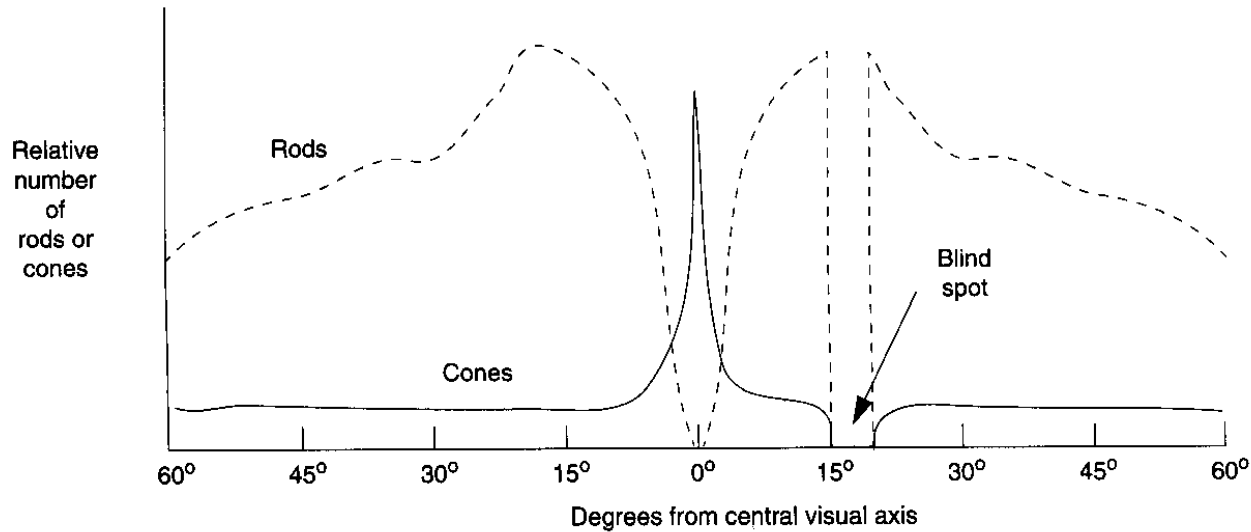
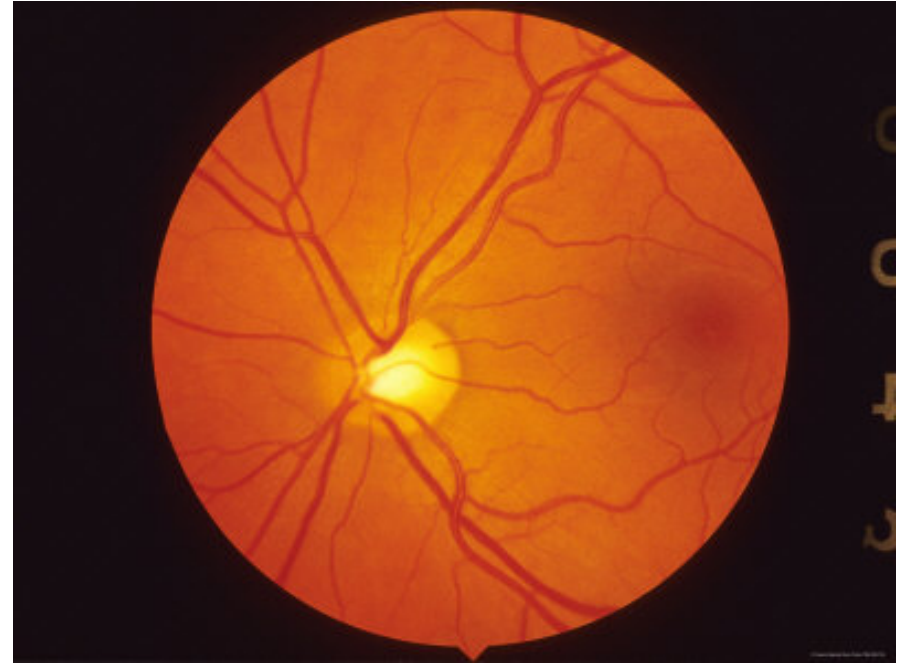
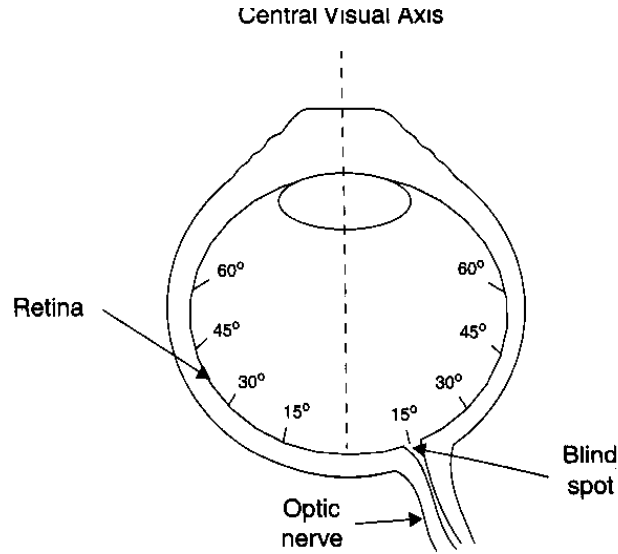
- We almost never see a “pure” wavelength of light; rather a mixture of wavelengths, each with a different “power”
- Only some colors occur as pure wavelengths; many are mixtures of pure colors (e.g. white)



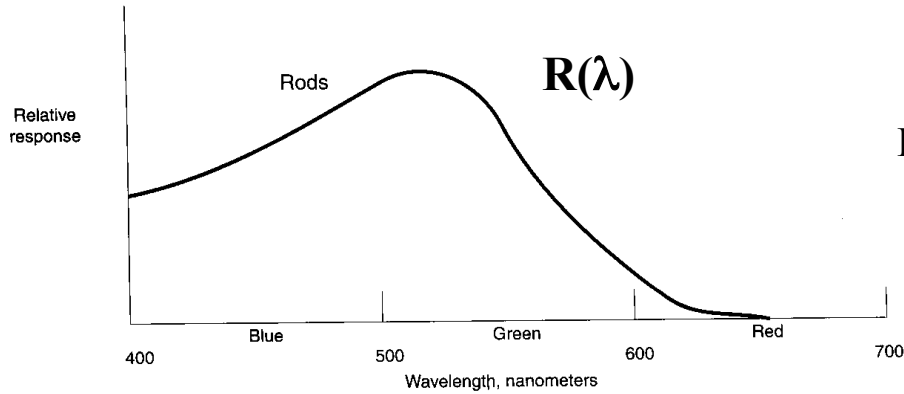
Sunlight



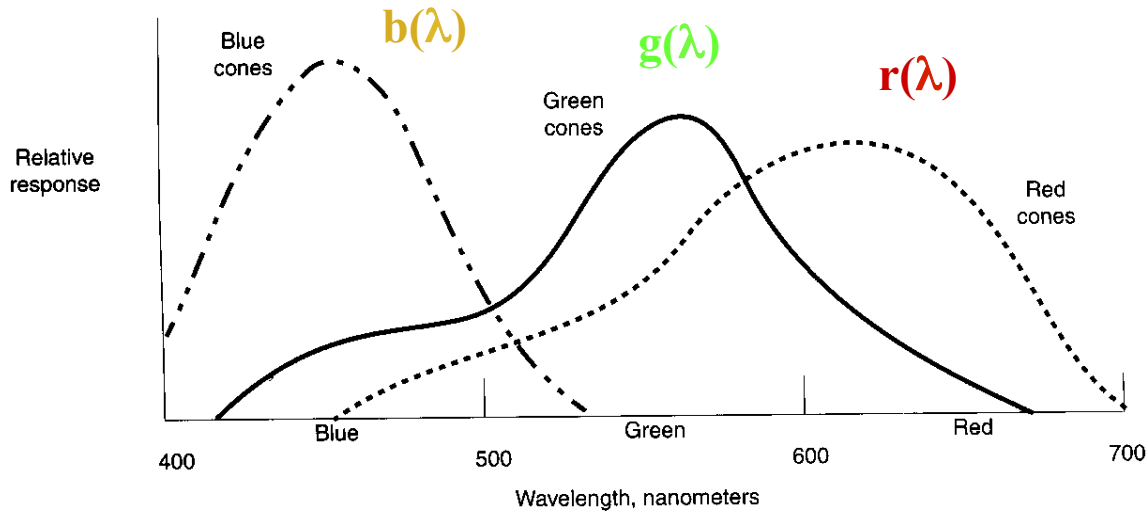
Example: The Human Eye



The Human Eye Response



$$\text{BRIGHTNESS} = \int_{\lambda=400nm}^{\lambda=700nm} R(\lambda)I(\lambda)d\lambda$$

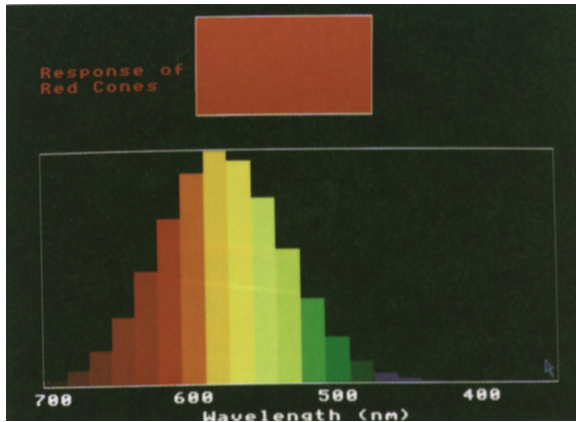


$$\text{RED} = \int_{\lambda=400nm}^{\lambda=700nm} r(\lambda)I(\lambda)d\lambda$$

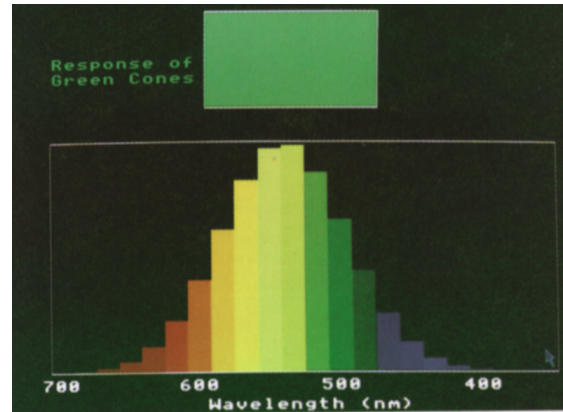
$$\text{GREEN} = \int_{\lambda=400nm}^{\lambda=700nm} g(\lambda)I(\lambda)d\lambda$$

$$\text{BLUE} = \int_{\lambda=400nm}^{\lambda=700nm} b(\lambda)I(\lambda)d\lambda$$

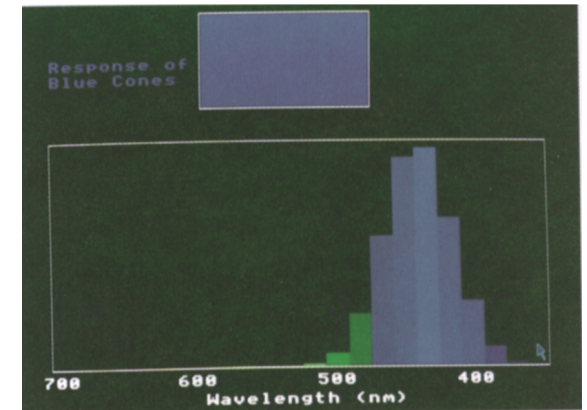
Color receptors



“Red” cone

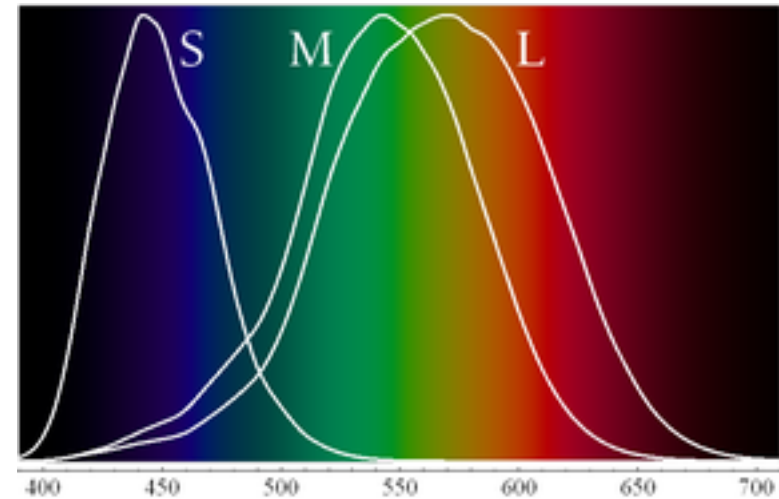


“Green” cone



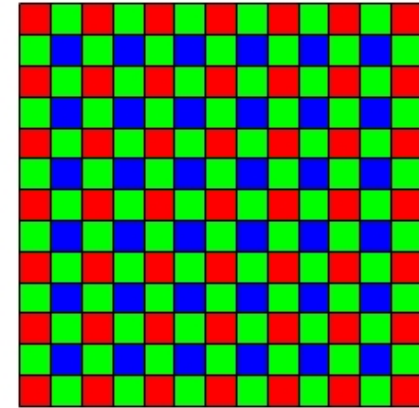
“Blue” cone

Principle of univariance: cones give the same amount of response to different wavelengths -- a single cone cannot distinguish color. Output of cone is obtained by summing probability of absorption over wavelengths.



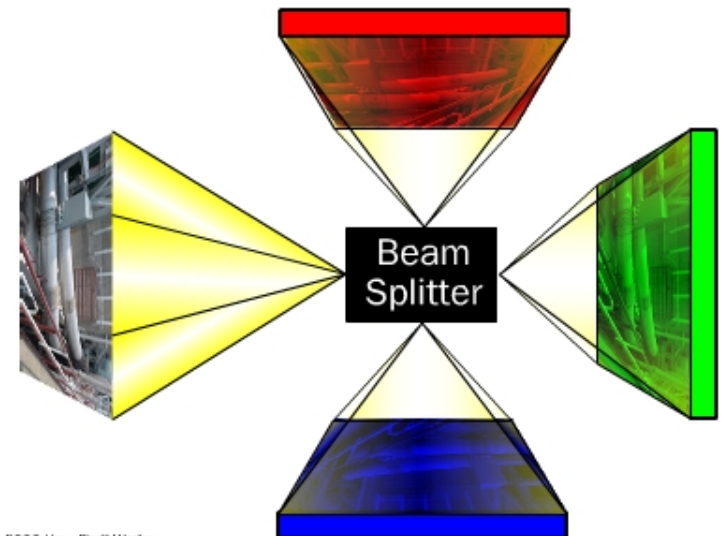
How Color Cameras Work

- 1 CCD cameras
 - A **Bayer** pattern is placed in front of the CCD
 - A **Demosaicing** process reads the pixels in a region and computes color and intensity
- 3 CCD camera use a beam splitter and 3 separate CCDs
 - higher color fidelity
 - needs lots of light
 - requires careful alignment of ccds



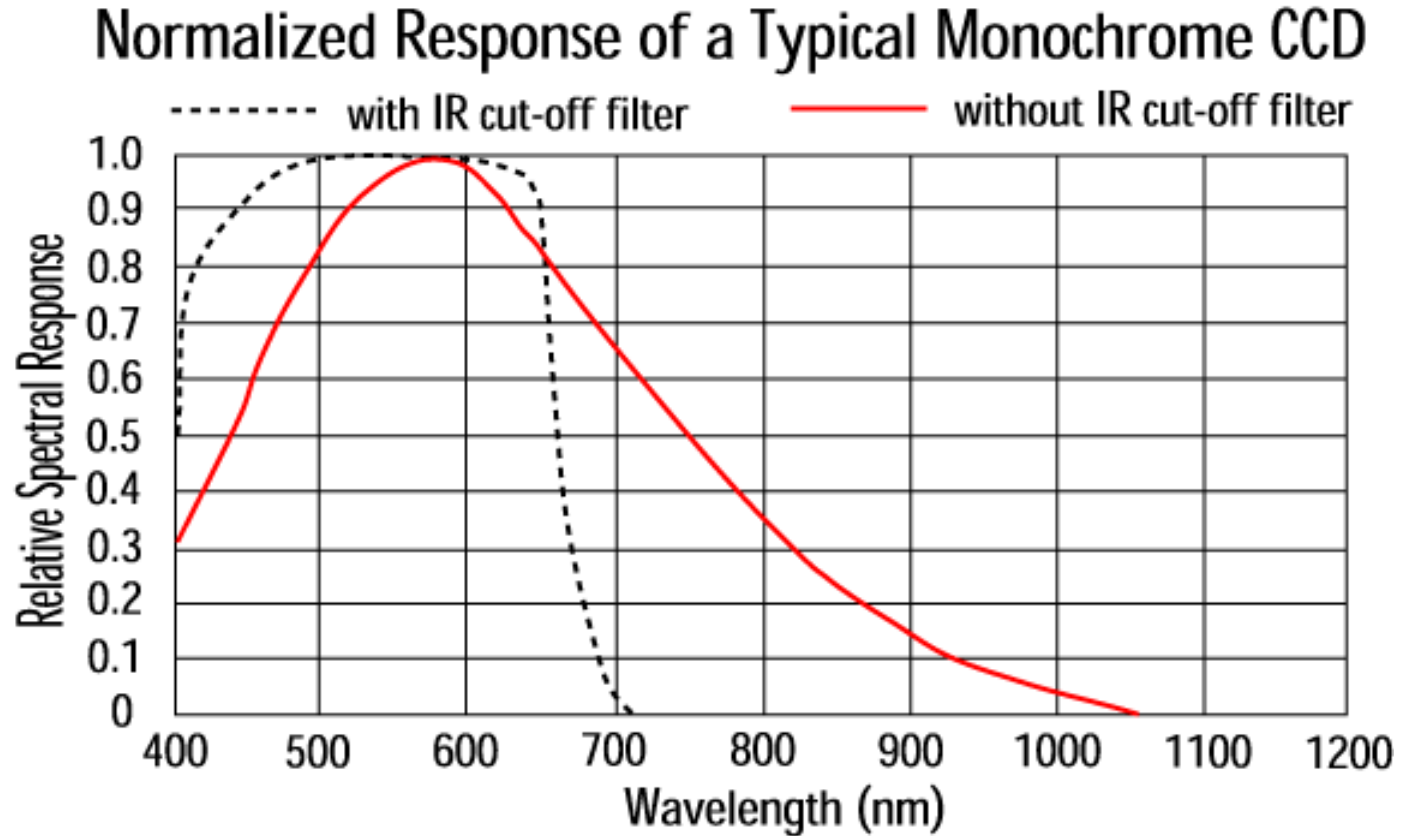
Bayer filter

© 2000 How Stuff Works

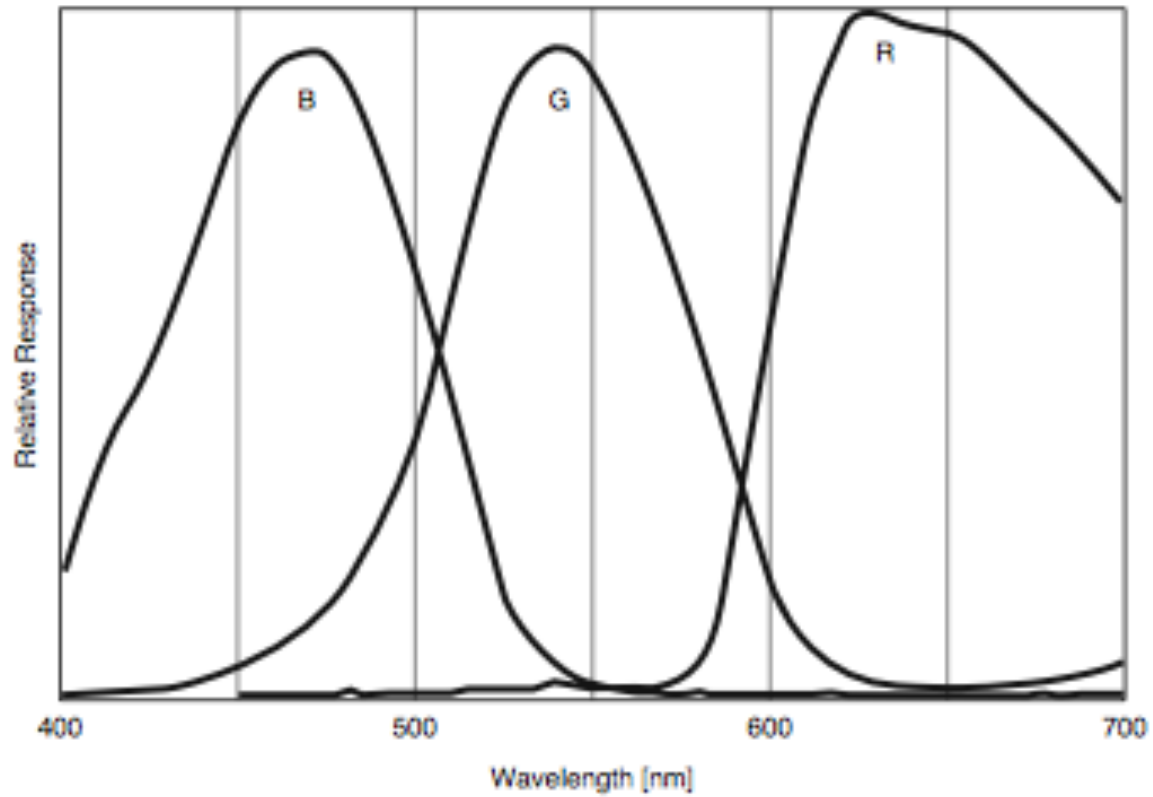


© 2000 How Stuff Works

Unfiltered CCD Response

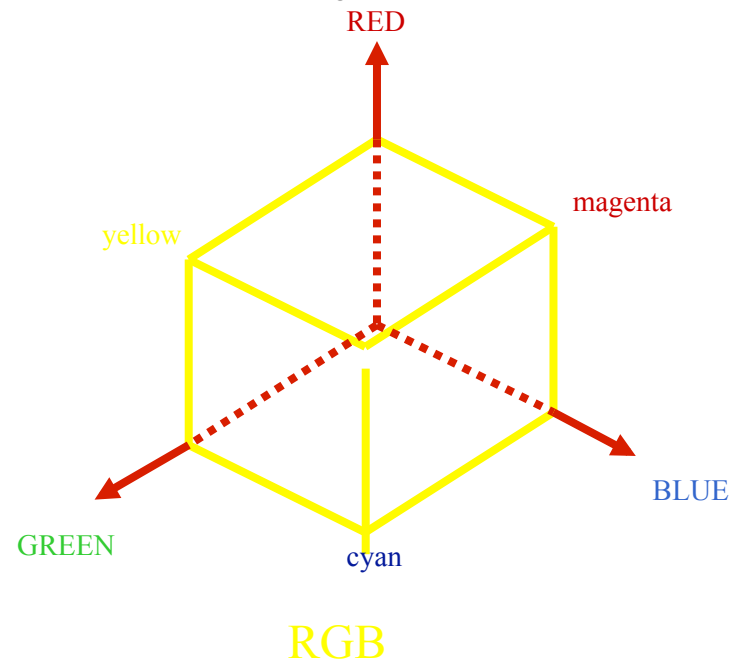
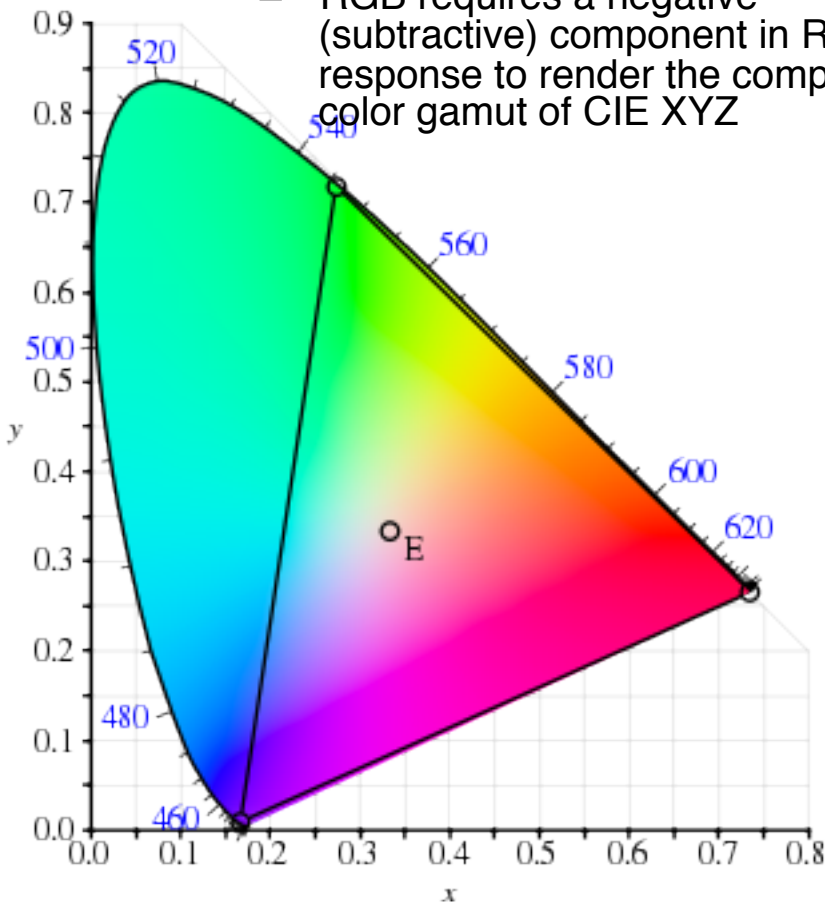
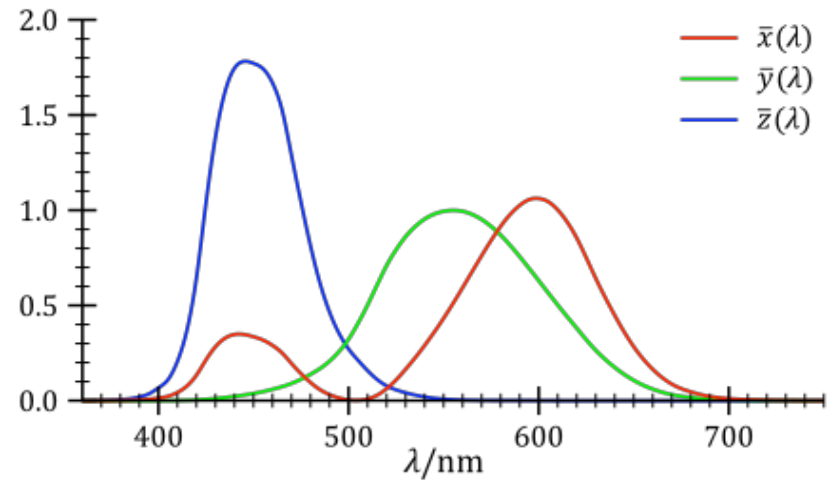


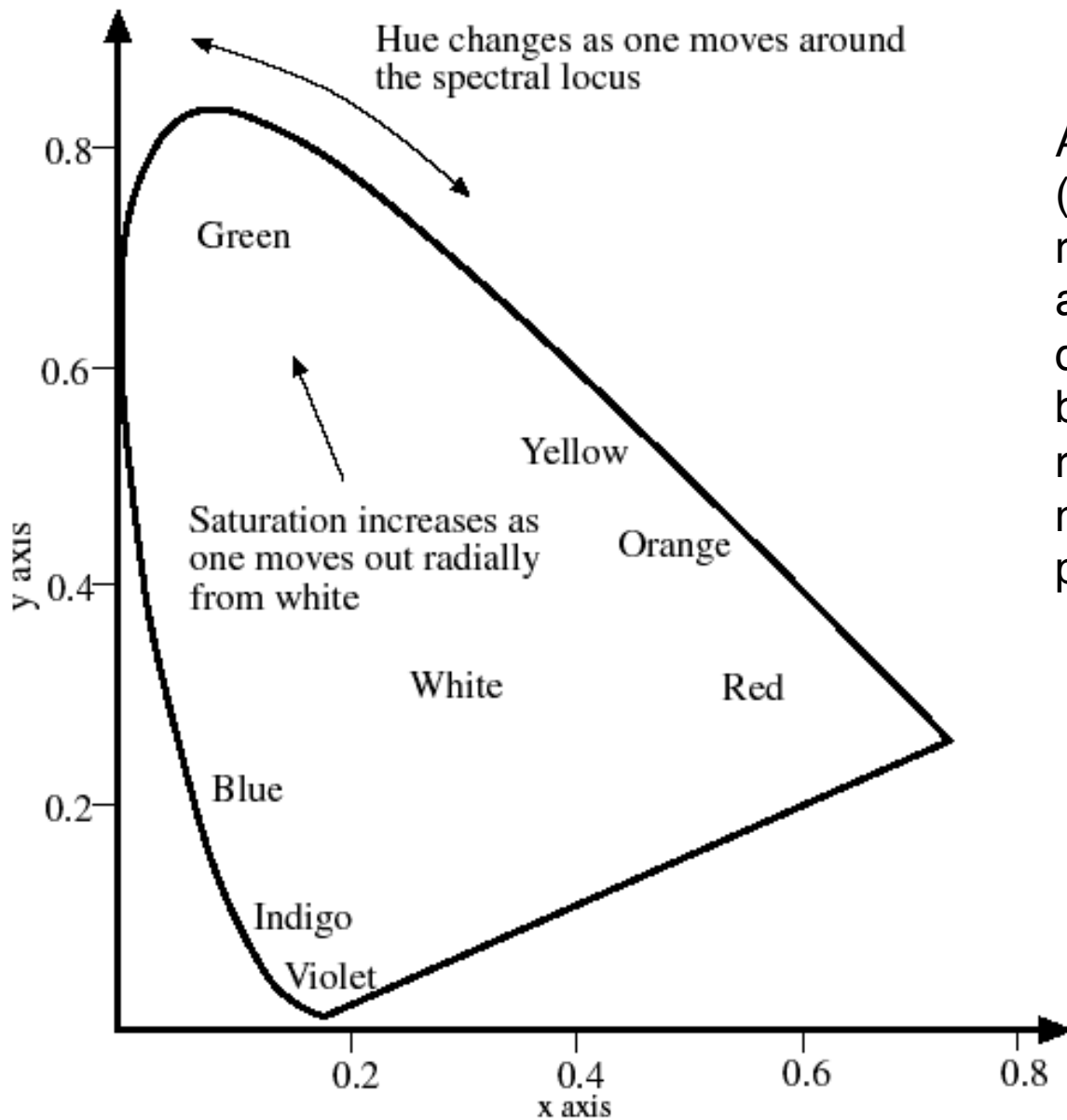
One Chip CCD Response (Sony DFW V500)



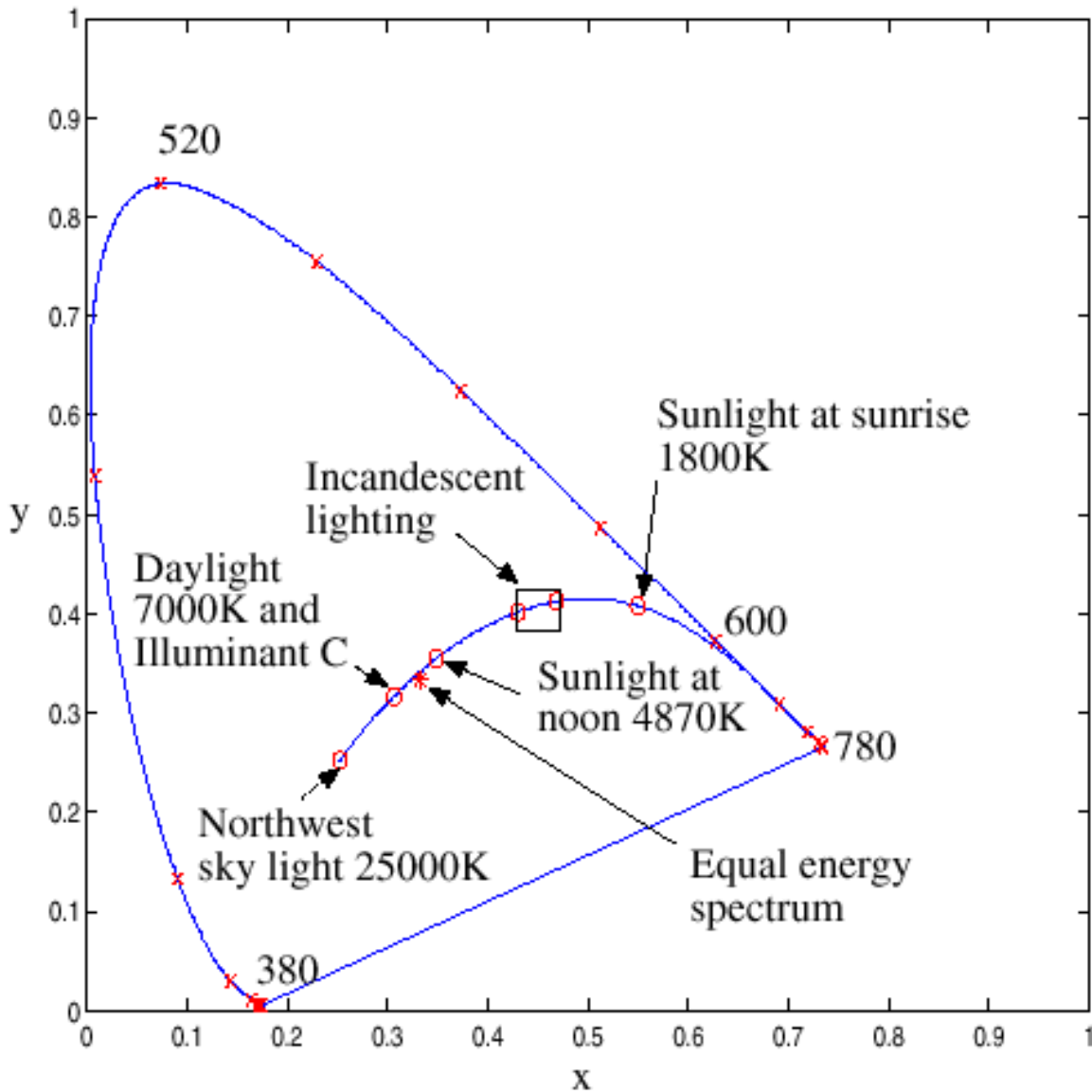
Standard Linear Color Systems

- Several standards are used to define “color” based on specific spectral response functions
 - CIE (Commission International d’Eclairage) establishes standards
 - CIE XYZ is a popular standard with everywhere positive response
 - RGB requires a negative (subtractive) component in R response to render the complete color gamut of CIE XYZ





A qualitative rendering of the CIE (x,y) space. The blobby region represents visible colors. There are sets of (x, y) coordinates that don't represent real colors, because the primaries are not real lights (so that the color matching functions could be positive everywhere).



A plot of the CIE (x,y) space. We show the spectral locus (the colors of monochromatic lights) and the black-body locus (the colors of heated black-bodies). I have also plotted the range of typical incandescent lighting.

Why specify color numerically?

- Accurate color reproduction is commercially valuable
 - Many products are identified by color (“golden” arches;
- Few color names are widely recognized by English speakers -
 - About 10; other languages have fewer/more, but not many more.
 - It’s common to disagree on appropriate color names.
- Color reproduction problems increased by prevalence of digital imaging - eg. digital libraries of art.
 - How do we ensure that everyone sees the same color?

ANOTHER LINEAR SCHEME FOR REPRESENTING COLOR

- Invented for color television (NTSC)
- Backward compatible with B/W TV
- Y given higher bandwidth than I/Q

$$\begin{bmatrix} Y \\ I \\ Q \end{bmatrix} = \begin{bmatrix} .3 & .59 & .11 \\ .6 & -.28 & -.32 \\ .21 & -.52 & .31 \end{bmatrix} \begin{bmatrix} R \\ G \\ B \end{bmatrix}$$

YUV is similar to YIQ; PAL vs. NTSC
YCbCr is YUV but with a different
reference level for Chrominance

Dividing Up Color Space

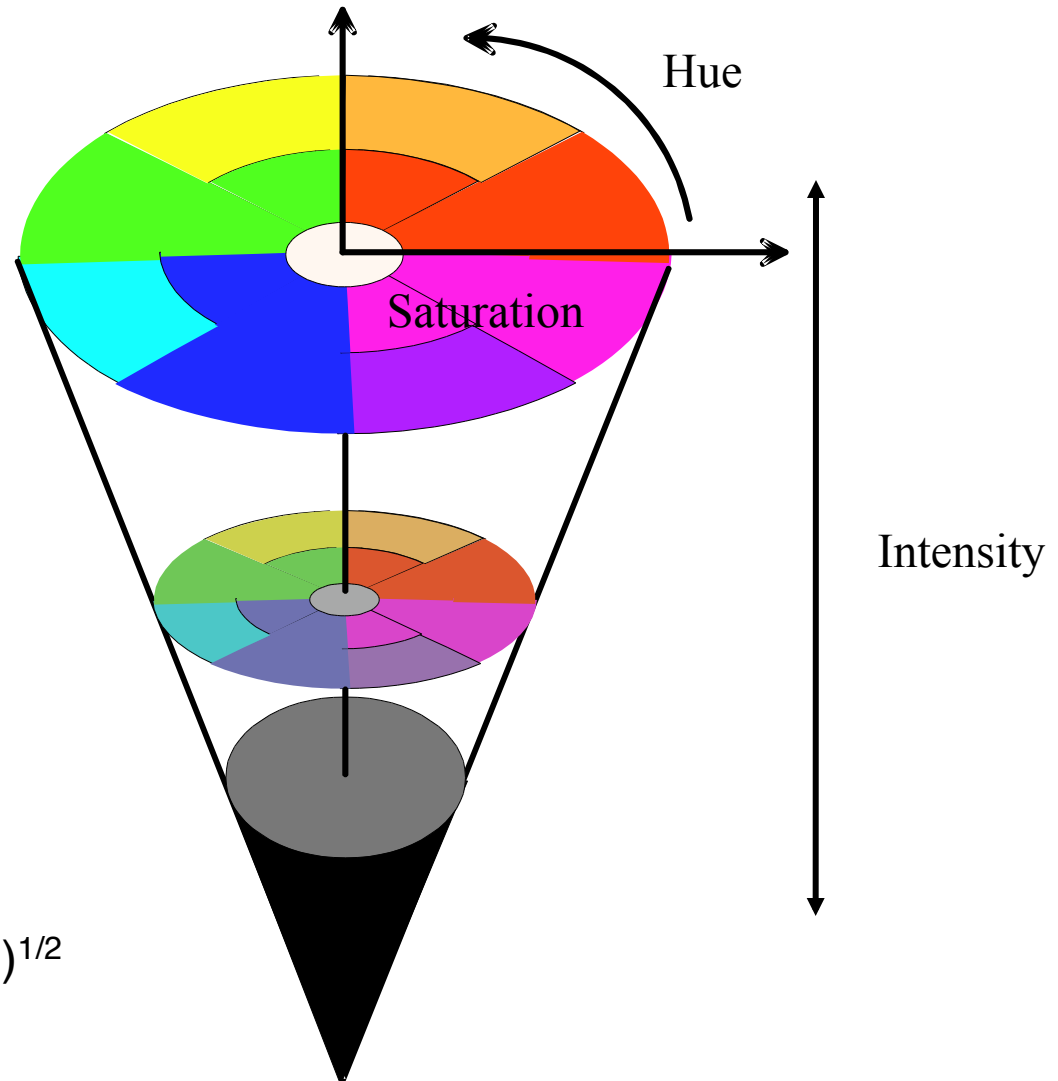
HSI is a nonlinear representation of color space. Note the non-uniform treatment of color

$$I = (R+G+B)/3 \text{ or} \\ L = .3 R + .6G + .1B$$

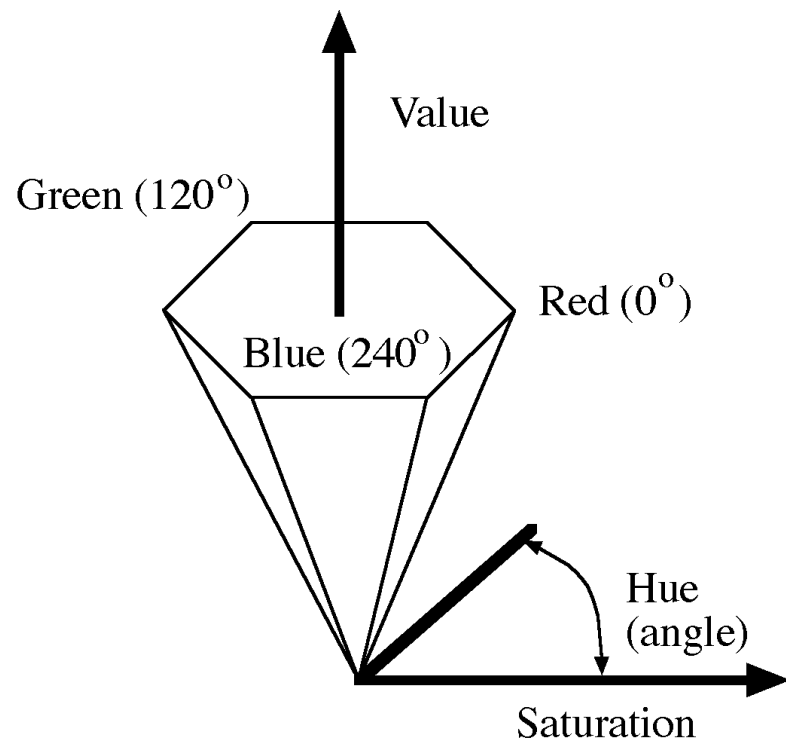
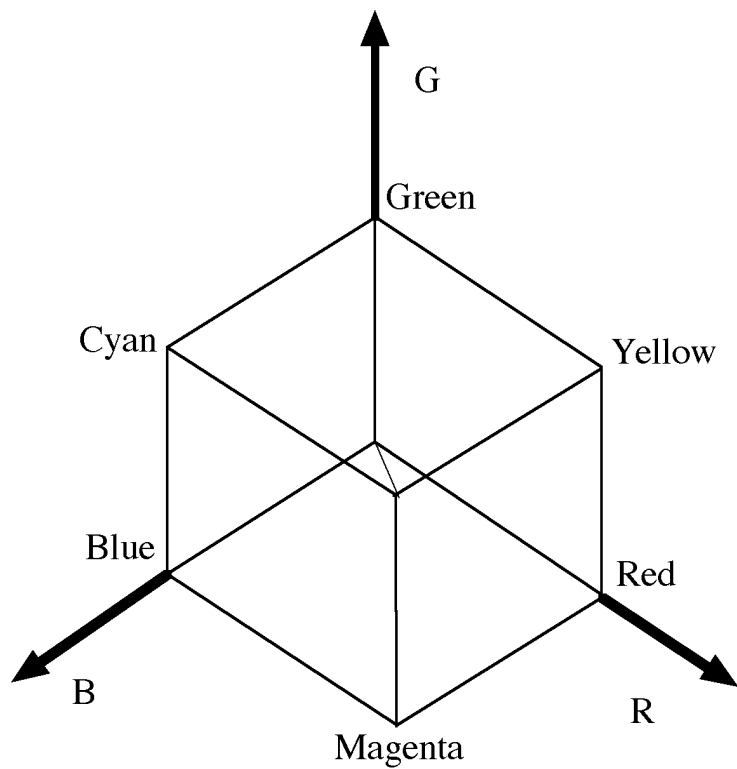
$$S = 1 - 3 \min(R,G,B)/I$$

$$H = \begin{cases} \cos^{-1}(x) & \text{if } G > B \\ \pi - \cos^{-1}(x) & \text{if } G < B \end{cases}$$

$$x = (R-G) + (R-B)/((R-G)^2 + (R-B)(G-B))^{1/2}$$



HSV hexcone



Color perception...

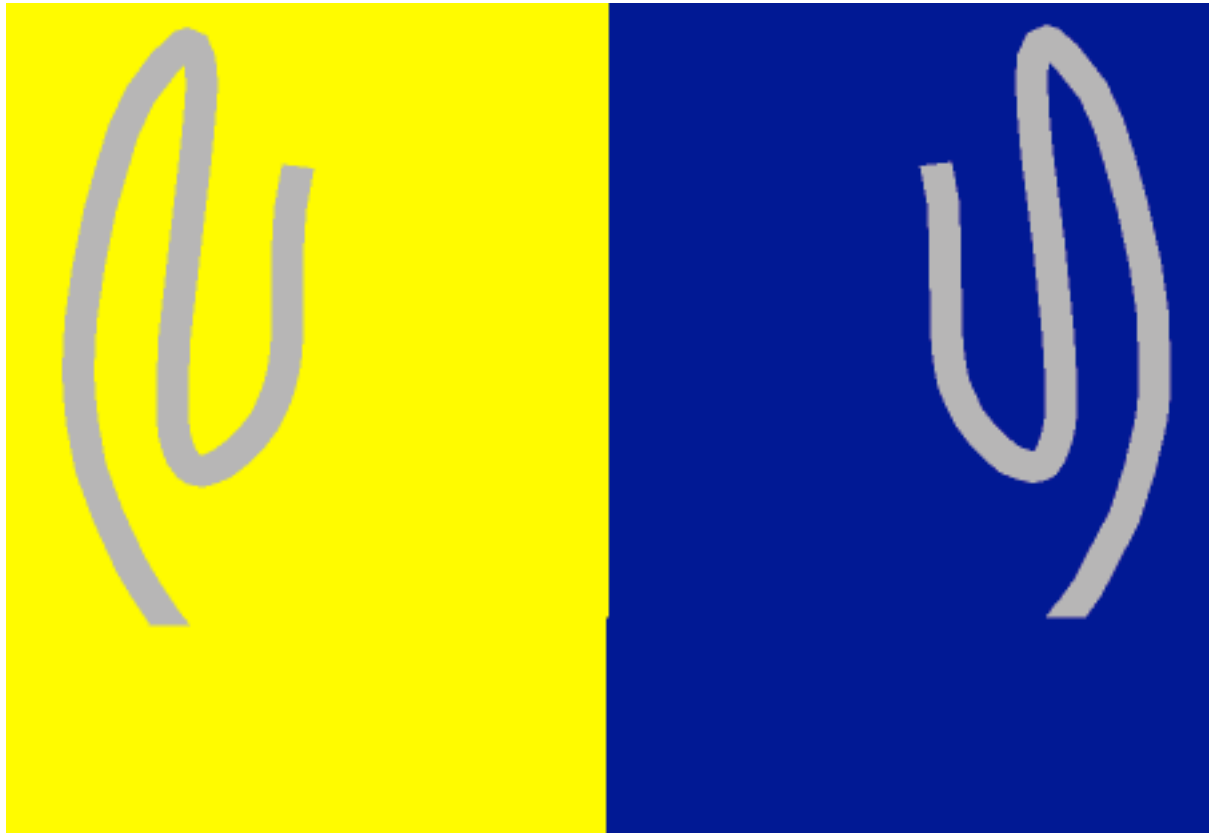
- It's not all physics: as the following samples show.

Brightness contrast and constancy

- The apparent brightness depends on the surrounding region
 - **brightness contrast**: a constant colored region seem lighter or darker depending on the surround:



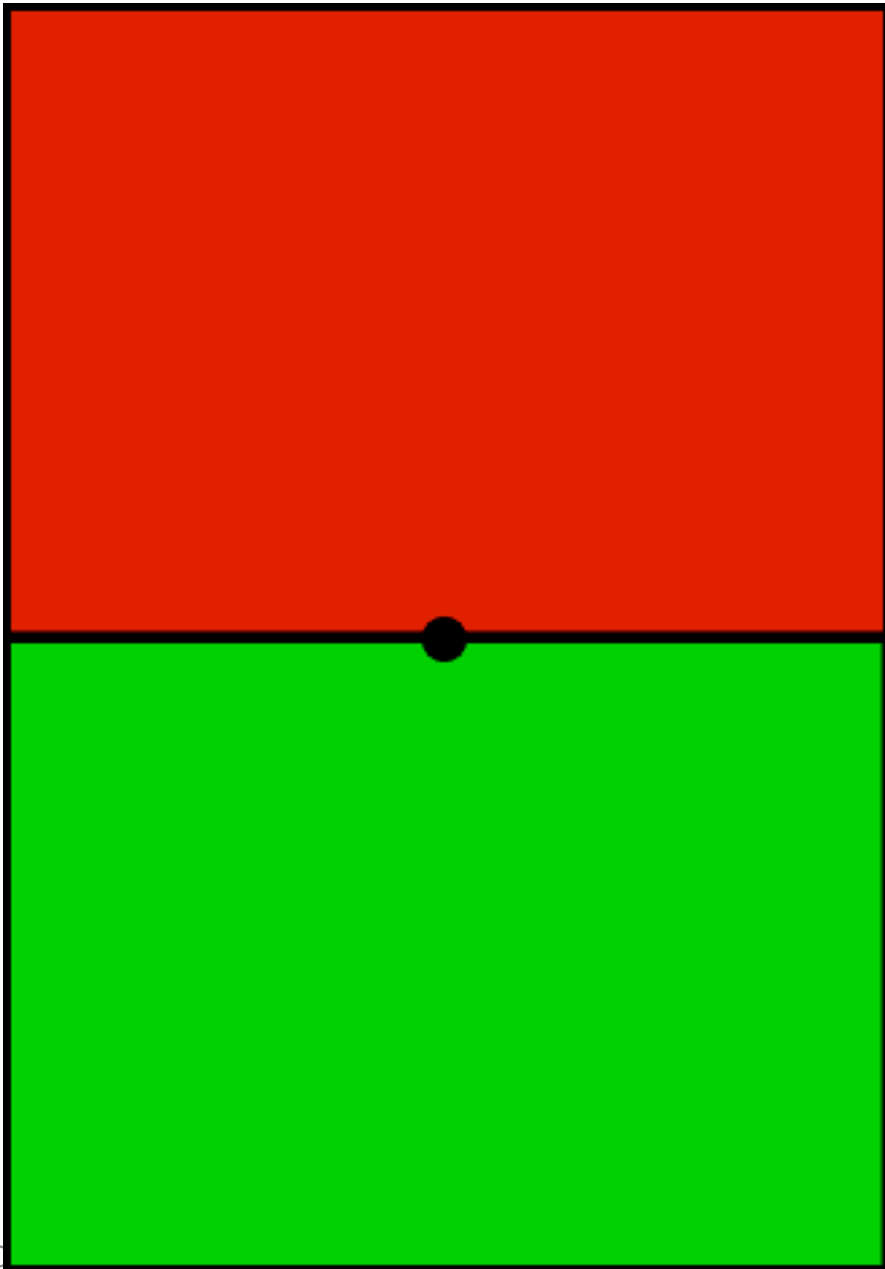
- http://www.sandlotscience.com/Contrast/Checker_Board_2.htm
- **brightness constancy**: a surface looks the same under widely varying lighting conditions.

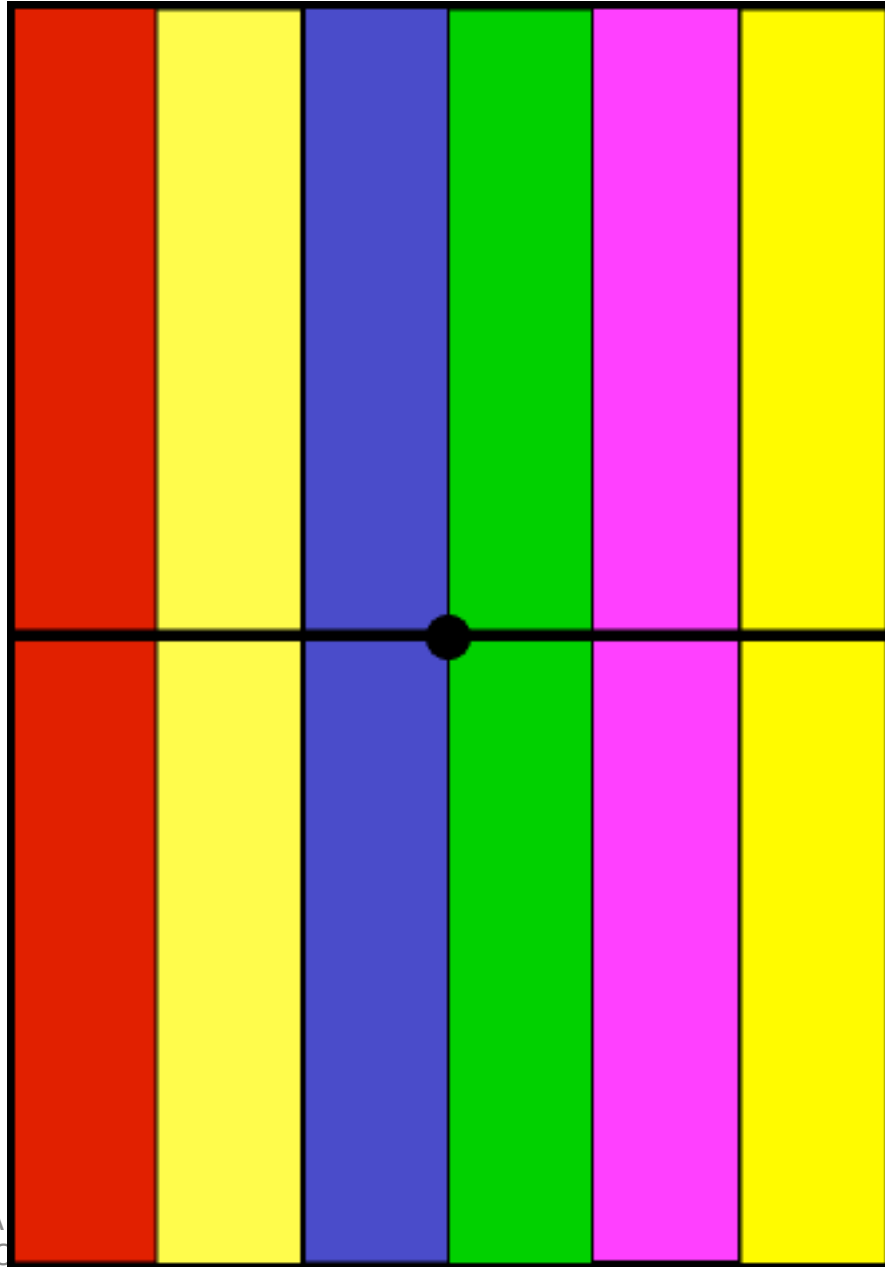


Computer Vision - A Modern Approach
Set: Color
Slides by D.A. Forsyth



Computer Vision - A Modern Approach
Set: Color
Slides by D.A. Forsyth





XXXXXX

GREEN

GREEN

XXXXXX

BLUE

BLUE

XXXXXX

YELLOW

YELLOW

XXXXXX

PURPLE

PURPLE

XXXXXX

ORANGE

ORANGE

XXXXXX

RED

RED

XXXXXX

WHITE

WHITE

XXXXXX

PURPLE

PURPLE

XXXXXX

ORANGE

ORANGE

XXXXXX

BLUE

BLUE

XXXXXX

RED

RED

XXXXXX

GREEN

GREEN

XXXXXX

WHITE

WHITE

XXXXXX

YELLOW

YELLOW

XXXXXX

PURPLE

PURPLE

XXXXXX

RED

RED

XXXXXX

GREEN

GREEN

XXXXXX

BLUE

BLUE

One Application: Photometric Stereo

Non-rigid Photometric Stereo with Colored Lights

C. Hernández¹, G. Vogiatzis¹, G.J. Brostow²,
B. Stenger¹ and R. Cipolla²

Toshiba Research Cambridge¹
University of Cambridge²

Next Lecture: Linear Filters and Image Processing

- Reading: FP 4; SZ 3